

[Live on Facebook at 10:00 AM today, 25 May 2026] 4th Elizabeth R. Ventura Memorial Lecture

From psspaktibidad@googlegroups.com <psspaktibidad@googlegroups.com>  
on behalf of  
PSSP <pssponline@gmail.com>

Date Mon 5/25/2026 8:37 AM

Cc Department of Psychology UP Diliman <psych.upd@up.edu.ph>; Department of Psychology - Chair UP Diliman <chair.psych.upd@up.edu.ph>

[Paanyaya mula sa UP Diliman Departamento ng Sikolohiya]

You are cordially invited to the 4th and final Elizabeth R. Ventura Memorial Lecture, a distinguished lecture series honoring the enduring legacy of Dr. Elizabeth R. Ventura.

📅 May 25, 2026 (Monday)

🕒 10:00 AM PST

📺 Live Stream via <https://www.facebook.com/UPDPsych>

🔍 Presentation

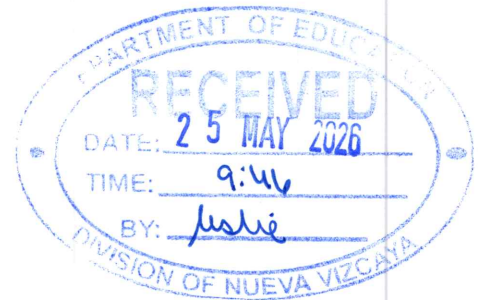
**Developmental Psychological Assessment in the Philippines: Progress, Challenges, and Future Directions**

🗣️ Speaker

**Assoc. Prof. Summer Parcon, PhD, RPsy**

🌟 This event is free and open to the public. No registration is required. **Certificates will be issued to participants who complete and submit the evaluation form.**

MEMORANDUM		Date: 5-25-26	Released (Records): <i>Justie</i>
To:	<input checked="" type="checkbox"/> PSDS/DICs	<input checked="" type="checkbox"/> Elem/Sec School Heads	
	<input type="checkbox"/> Private Schools	<input type="checkbox"/> Others:	
For:	<input checked="" type="checkbox"/> Information	<input checked="" type="checkbox"/> Dissemination	
	<input checked="" type="checkbox"/> Guidance	<input type="checkbox"/> Strict Compliance	
<b>ORLANDO E. MANUEL Ph.D., CESO V</b> Schools Division Superintendent			
By:	<input type="checkbox"/> ASDS	<input type="checkbox"/> CID Chief	<input type="checkbox"/> SGOD Chief
	<input type="checkbox"/> AO	<input type="checkbox"/> Atty	Signature: <i>OM</i>



ELIZABETH R. VENTURA  
MEMORIAL LECTURES



## Developmental Psychological Assessment in the Philippines: Progress, Challenges, and Future Directions

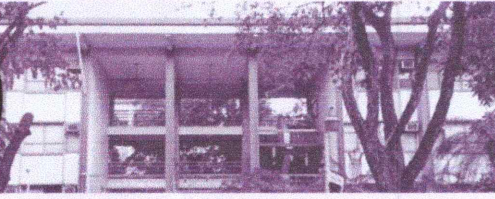
### OUR SPEAKER



**SUMMER PARCON, PHD, RPSY**

Summer Parcon, PhD, RPsy, is a licensed Psychologist and an Associate Professor in the Department of Psychology, University of the Philippines Diliman. She earned her Doctorate degree in Psychology from the same institution, specializing in Developmental Psychology with a minor in Clinical Psychology. Her research interests are centered on Filipino family dynamics and parent-child relationships, as well as children's socio-emotional and cognitive development -- particularly the development of empathy, theory-of-mind, prosocial behaviors and pakikiramdam. Her extension and public service work include conducting cognitive, socio-emotional, and personality assessments across lifespan; facilitating brief intervention for children and adolescents; and implementing and evaluating community-based programs aimed at promoting optimal well-being and development. She currently serves as a Graduate Program Coordinator, overseeing the Office of the Graduate Program of the College of Social Sciences and Philosophy.

UP DILIMAN  
PSYCHOLOGY



## ELIZABETH R. VENTURA MEMORIAL LECTURES

# Developmental Psychological Assessment in the Philippines: Progress, Challenges, and Future Directions

25 MAY 2026 - 10:00 AM - VIA FB LIVE

### OUR SPEAKER



SUMMER PARCON, PHD, RPSY

### Abstract

Developmental psychological assessment in the Philippines has evolved significantly over the past decades due to growing awareness of child and adult development concerns. The field encompasses the evaluation of cognitive, emotional, behavioral, social, and developmental functioning across the lifespan. Despite progress, developmental psychological assessment in the Philippines continues to face major challenges. One of the most significant concerns is the heavy reliance on Western-developed assessment tools that may not fully reflect Filipino language, culture, and socio-economic realities. Further, access to developmental assessment services also remains uneven with urban areas having greater availability of licensed professional and testing facilities. This talk highlights the importance and purpose of developmental psychological assessment, and digs deeper into the process, tools and approaches, as well as the current challenges and contextual considerations in the field. It also explores the possible future directions which focus on strengthening local test development, expanding professional training, improving accessibility, and enhancing multidisciplinary collaborations.

**Tungo sa isang malaya at mapagpalayang sikolohiya.**

### Secretariat

**Pambansang Samahan sa Sikolohiyang Pilipino**

**(National Association for Sikolohiyang Pilipino, Inc.)**

PRC CPD Accreditation Number: **2018-029**

Adres ng Opisina: **4A Alcal Building 285 Katipunan Avenue, Loyola Heights, Lungsod Quezon**

Araw at Oras ng Opisina: **Lunes - Biyernes; 10:00 n.u. - 7:00 n.g.**

Telephone: **(02) 8361-9260** | Mobile: **(0922) 875-1440**

E-mail: [pssp-online@gmail.com](mailto:pssp-online@gmail.com) / [secretariat@pssp.org.ph](mailto:secretariat@pssp.org.ph)

Website: <http://www.pssp.org.ph/>

Diwa E-Journal: <https://www.pssp.org.ph/diwa>

Facebook/Instagram/Twitter/YouTube: **pssp-online**

Online Membership Form: <http://bit.ly/pssp-membership-form>

Listahan ng mga Kasapi: <http://www.pssp.org.ph/pamunuan-at-kasapian/mga-kasapi/>



**[Bagong Libro] [Ang Ginhawa Bilang Hangaran at Balangkas](#)**

Violeta V. Bautista, PhD, RPsy at Divine Love A. Salvador, PhD, RPsy (Mga Patnugot)

--

You received this message because you are subscribed to the Google Groups "PSSP Aktibidad" group.

To unsubscribe from this group and stop receiving emails from it, send an email to [psspaktibidad+unsubscribe@googlegroups.com](mailto:psspaktibidad+unsubscribe@googlegroups.com).

To view this discussion visit

<https://groups.google.com/d/msgid/psspaktibidad/CANEJ4u3CogJAjdT4ZJmpWJLjeOZ-k2MGADv35%3DLunSfXn7djRg%40mail.gmail.com>.

For more options, visit <https://groups.google.com/d/optout>.