

Republika ng Pilipinas
Department of Education

OFFICE OF THE UNDERSECRETARY
HUMAN RESOURCE AND ORGANIZATIONAL DEVELOPMENT

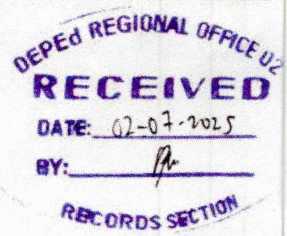
DepEd Regional Office No. 02



DOCS ID No:
020725099

Created by: Records
Date Created: 02/07/2025

MEMORANDUM
DM-OUHROD-2025-0311



TO : Regional Directors
Schools Division Superintendents
School Heads
All Others Concerned

FROM : **WILFREDO E. CABRAL**
Undersecretary for Human Resource and Organizational Development

Carmela Oracion
CARMELA C. ORACION
Assistant Secretary for Human Resource and Organizational Development

SUBJECT : VOLUNTARY PARTICIPATION IN THE INTERNATIONAL LARGE-SCALE ASSESSMENTS (ILSA) FOR MATH AND SCIENCE OFFERED BY THE GOKONGWEI BROTHERS FOUNDATION

DATE : 06 February 2025

The National Educators Academy of the Philippines (NEAP) invites interested teachers and school leaders to the free webinar series titled **International Large-Scale Assessments (ILSA) for Math and Science** offered by the Gokongwei Brothers Foundation (GBF).

This free webinar series will be delivered via the *GBF STEM Collab Bestie* Official Facebook Page with cross-posting on the *NEAP* Official Facebook Page, according to the following schedule:

	08 February 2025 (Saturday)	15 February 2025 (Saturday)	22 February 2025 (Saturday)
Math	9:00 a.m. <i>Primer on ILSAs and Mathematical Literacy</i>	9:00 a.m. <i>Math Assessment Framework</i>	9:00 a.m. <i>ILSA-aligned Math Questions</i>
Science	1:00 p.m. <i>Science Literacy and Assessment Framework</i>	1:00 p.m. <i>ILSA-aligned Science Questions</i>	1:00 p.m. <i>ILSA-aligned Formative and Summative Science Assessments</i>



Participants are expected to gain valuable insights into the process, content, and context of Programme for International Student Assessment (PISA) Mathematics and Science assessment frameworks. Likewise, they will be given hands-on activities to design ILSA-aligned assessments.

Kindly refer to the attached *Program/Webinar Posters* for more details. Should there be further concerns/questions, please contact **Ms. Candice Jungao**, GBF Education Programs Manager, through email candice.jungao@gbf.com.ph or mobile +639273869268.

For immediate dissemination and appropriate action.

hcb

Copy furnished:

OFFICE OF THE SECRETARY
 OFFICE OF THE UNDERSECRETARY FOR OPERATIONS
 OFFICE OF THE ASSISTANT SECRETARY FOR EXTERNAL PARTNERSHIPS SERVICE

February 13, 2025

To: **ALL SCHOOLS DIVISION SUPERINTENDENTS**

For information, dissemination and appropriate action.

BENJAMIN D. PARAGAS PhD, CESO III
 Director IV/ Regional Director

For the Regional Director:

ATTY. JOSE MARIO M. MACARILAY
 Chief Administrative Officer *JM*

DEPED REGIONAL OFFICE 02
RELEASED
 DATE: 02-14-2025
 BY: *J*
 RECORDS SECTION

MEMORANDUM		Date: 2-13-25	Released/Records: <i>hcb</i>
To:	<input checked="" type="checkbox"/> PSDS/DICs	<input checked="" type="checkbox"/> Elem/Sec School Heads	
	<input type="checkbox"/> Private Schools	<input type="checkbox"/> Others:	
For:	<input checked="" type="checkbox"/> Information	<input checked="" type="checkbox"/> Dissemination	
	<input type="checkbox"/> Guidance	<input type="checkbox"/> Strict Compliance	
ORLANDO E. MANUEL PhD., CESO V Schools Division Superintendent			
By:	<input type="checkbox"/> ASDS	<input type="checkbox"/> CID Chief	<input type="checkbox"/> SGOD Chief
	<input type="checkbox"/> AC	<input checked="" type="checkbox"/> Atty.	Signature: <i>Orlando Manuel</i>



Room 102, Rizal Building, DepEd Complex, Meralco Ave., Pasig City 1600
 Telephone Nos.: (+632) 86337206, (+632) 86318494, (+632) 86366549
 Email Address: usec.hrod@deped.gov.ph | Website: www.deped.gov.ph

Doc. Ref. Code: DM-OUHROD Rev 00
 Effectivity: 03.23.23 Page 2 of 2





GOKONGWEI
BROTHERS FOUNDATION

STEM
COLLAB



Free Webinar Series

LIVE Live via GBF STEM Collab Bestie Page

INTERNATIONAL LARGE-SCALE ASSESSMENTS FOR MATH & SCIENCE

FEB 08

FEB 15

FEB 22

MATH

9AM

Primer on ILSAs and
Mathematical Literacy

9AM

Math Assessment
Framework

9AM

ILSA-aligned
Math Questions

SCIENCE

1PM

Science Literacy and
Assessment Framework

1PM

ILSA-aligned Science
Questions

1PM

ILSA-aligned Formative
and Summative Science
Assessments

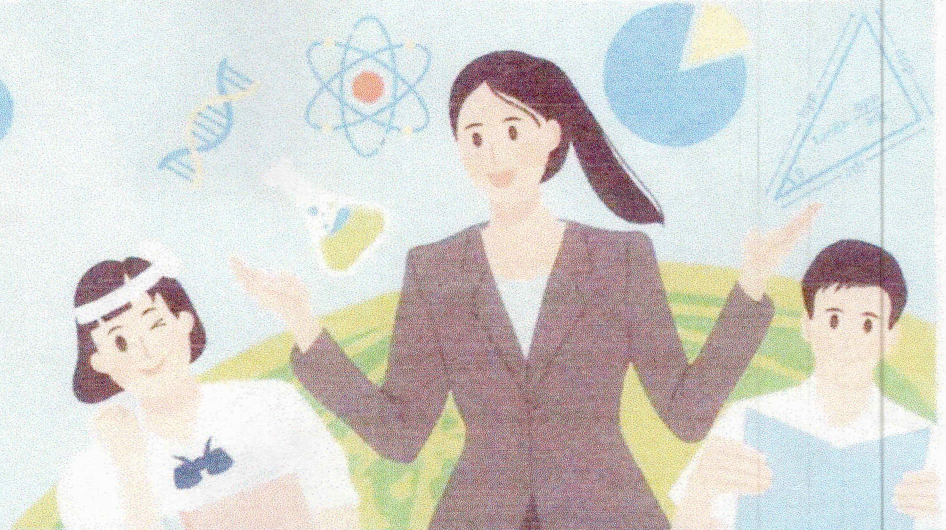
With
Certificates



Free
Materials



PPST
aligned
1,5,7



To register, scan the code or go to <https://bit.ly/2025S1GBFSTEMCollab>

- Certificates will be given to the participants who complete and submit valid requirements for:
 - > 3/3 Science sessions, or 3/3 Math sessions, or 6/6 Math and Science sessions.
- All certificates will be issued in batches by **March 24, 2025**.
- GBF reserves the right to issue certificates to qualified educators.

INTERNATIONAL LARGE-SCALE ASSESSMENTS FOR MATH & SCIENCE

SERIES DATES: FEBRUARY 8, 15, & 22, 2025

MATH : 9AM

SCIENCE: 1PM



**CATHERINE P.
VISTRO-YU, ED.D.**

Professor & Program Coordinator for
Mathematical Education at the
Department of Mathematics,
School of Science and Engineering
Ateneo de Manila University



**CRIST JOHN M.
PASTOR, PH.D.**

Faculty, College of Advanced Studies
Philippine Normal University



**MARK LESTER B.
GARCIA, PH.D. (CAND.)**

Lecturer & Academic Researcher
Ateneo de Manila University



**ALFONS JAYSON O.
PELGONE, PH.D.**

Associate Dean
Faculty of Science, Technology and
Mathematics
Philippine Normal University



**DONNA D. BAUTISTA,
M.SC.**

Mathematics Educator & Researcher
National University



**BRANDE "ER"
C. PALOMAR, PH.D.**

Faculty, College of Advanced Studies
Philippine Normal University



To register, scan the code or go to <https://bit.ly/2025STGBFSTEMCollab>

- Certificates will be given to the participants who complete and submit valid requirements for:
 - > 3/3 Science sessions, or 3/3 Math sessions, or 6/6 Math and Science sessions.
- All certificates will be issued in batches by **March 24, 2025**.
- GBF reserves the right to issue certificates to qualified educators.