

**PHILIPPINE BIDDING DOCUMENTS**

**Procurement of  
INFRASTRUCTURE  
PROJECTS**

Government of the Republic of the Philippines

PROCUREMENT FOR THE CY 2024  
BEFF Repair/Rehabilitation of Classrooms  
Batch 1

**PB09-001-SDONV-CY 2024 BEFF REPAIR**  
Project ID

**Sixth Edition  
July 2020**

# Preface

These Philippine Bidding Documents (PBDs) for the procurement of Infrastructure Projects (hereinafter referred to also as the “Works”) through Competitive Bidding have been prepared by the Government of the Philippines for use by all branches, agencies, departments, bureaus, offices, or instrumentalities of the government, including government-owned and/or -controlled corporations, government financial institutions, state universities and colleges, local government units, and autonomous regional government. The procedures and practices presented in this document have been developed through broad experience, and are for mandatory use in projects that are financed in whole or in part by the Government of the Philippines or any foreign government/foreign or international financing institution in accordance with the provisions of the 2016 revised Implementing Rules and Regulations (IRR) of Republic Act (RA) No. 9184.

The PBDs are intended as a model for admeasurements (unit prices or unit rates in a bill of quantities) types of contract, which are the most common in Works contracting.

The Bidding Documents shall clearly and adequately define, among others: (i) the objectives, scope, and expected outputs and/or results of the proposed contract; (ii) the eligibility requirements of Bidders; (iii) the expected contract duration; and (iv) the obligations, duties, and/or functions of the winning Bidder.

Care should be taken to check the relevance of the provisions of the PBDs against the requirements of the specific Works to be procured. If duplication of a subject is inevitable in other sections of the document prepared by the Procuring Entity, care must be exercised to avoid contradictions between clauses dealing with the same matter.

Moreover, each section is prepared with notes intended only as information for the Procuring Entity or the person drafting the Bidding Documents. They shall not be included in the final documents. The following general directions should be observed when using the documents:

- a. All the documents listed in the Table of Contents are normally required for the procurement of Infrastructure Projects. However, they should be adapted as necessary to the circumstances of the particular Project.
- b. Specific details, such as the “*name of the Procuring Entity*” and “*address for bid submission,*” should be furnished in the Instructions to Bidders, Bid Data Sheet, and Special Conditions of Contract. The final documents should contain neither blank spaces nor options.
- c. This Preface and the footnotes or notes in italics included in the Invitation to Bid, BDS, General Conditions of Contract, Special Conditions of Contract, Specifications, Drawings, and Bill of Quantities are not part of the text of the final document, although they contain instructions that the Procuring Entity should strictly follow.
- d. The cover should be modified as required to identify the Bidding Documents as to the names of the Project, Contract, and Procuring Entity, in addition to date of issue.

- e. Modifications for specific Procurement Project details should be provided in the Special Conditions of Contract as amendments to the Conditions of Contract. For easy completion, whenever reference has to be made to specific clauses in the Bid Data Sheet or Special Conditions of Contract, these terms shall be printed in bold typeface on Sections I (Instructions to Bidders) and III (General Conditions of Contract), respectively.
- f. For guidelines on the use of Bidding Forms and the procurement of Foreign-Assisted Projects, these will be covered by a separate issuance of the Government Procurement Policy Board.

# TABLE OF CONTENTS

|  |           |
|--|-----------|
| <b>Glossary of Terms, Abbreviations, and Acronyms .....</b>                  | <b>5</b>  |
| <b>Section I. Invitation to Bid.....</b>                                     | <b>7</b>  |
| <b>Section II. Instructions to Bidders .....</b>                             | <b>11</b> |
| 1. Scope of Bid .....  | 12        |
| 2. Funding Information .....   | 12        |
| 3. Bidding Requirements.....   | 12        |
| 4. Corrupt, Fraudulent, Collusive, Coercive, and Obstructive Practices ..... | 12        |
| 5. Eligible Bidders .....  | 13        |
| 6. Origin of Associated Goods .....  | 13        |
| 7. Subcontracts .....  | 13        |
| 8. Pre-Bid Conference.....   | 14        |
| 9. Clarification and Amendment of Bidding Documents .....                    | 14        |
| 10. Documents Comprising the Bid: Eligibility and Technical Components.....  | 14        |
| 11. Documents Comprising the Bid: Financial Component .....                  | 15        |
| 12. Alternative Bids .....   | 15        |
| 13. Bid Prices .....   | 15        |
| 14. Bid and Payment Currencies .....   | 15        |
| 15. Bid Security .....   | 16        |
| 16. Sealing and Marking of Bids.....   | 16        |
| 17. Deadline for Submission of Bids.....                                     | 16        |
| 18. Opening and Preliminary Examination of Bids.....                         | 16        |
| 19. Detailed Evaluation and Comparison of Bids .....                         | 16        |
| 20. Post Qualification .....   | 17        |
| 21. Signing of the Contract .....  | 17        |
| <b>Section III. Bid Data Sheet .....</b>                                     | <b>18</b> |
| <b>Section IV. General Conditions of Contract.....</b>                       | <b>20</b> |
| 1. Scope of Contract.....  | 21        |
| 2. Sectional Completion of Works .....                                       | 21        |
| 3. Possession of Site.....   | 21        |
| 4. The Contractor's Obligations .....  | 21        |
| 5. Performance Security.....   | 22        |
| 6. Site Investigation Reports .....  | 22        |

|     |   |           |
|-----|---|-----------|
| 7.  | Warranty.....   | 22        |
| 8.  | Liability of the Contractor.....  | 22        |
| 9.  | Termination for Other Causes .....                                      | 22        |
| 10. | Dayworks.....   | 23        |
| 11. | Program of Work.....  | 23        |
| 12. | Instructions, Inspections and Audits.....                               | 23        |
| 13. | Advance Payment .....   | 23        |
| 14. | Progress Payments .....   | 23        |
| 15. | Operating and Maintenance Manuals .....                                 | 24        |
|     | <b>Section V. Special Conditions of Contract.....</b>                   | <b>25</b> |
|     | <b>Section VI. Specifications .....</b>                                 | <b>28</b> |
|     | <b>Section VII. Drawings.....</b>                                       | <b>29</b> |
|     | <b>Section VIII. Bill of Quantities .....</b>                           | <b>30</b> |
|     | <b>Section IX. Checklist of Technical and Financial Documents .....</b> | <b>31</b> |

# ***Glossary of Terms, Abbreviations, and Acronyms***

**ABC** – Approved Budget for the Contract.

**ARCC** – Allowable Range of Contract Cost.

**BAC** – Bids and Awards Committee.

**Bid** – A signed offer or proposal to undertake a contract submitted by a bidder in response to and in consonance with the requirements of the bidding documents. Also referred to as *Proposal* and *Tender*. (2016 revised IRR, Section 5[c])

**Bidder** – Refers to a contractor, manufacturer, supplier, distributor and/or consultant who submits a bid in response to the requirements of the Bidding Documents. (2016 revised IRR, Section 5[d])

**Bidding Documents** – The documents issued by the Procuring Entity as the bases for bids, furnishing all information necessary for a prospective bidder to prepare a bid for the Goods, Infrastructure Projects, and/or Consulting Services required by the Procuring Entity. (2016 revised IRR, Section 5[e])

**BIR** – Bureau of Internal Revenue.

**BSP** – Bangko Sentral ng Pilipinas.

**CDA** – Cooperative Development Authority.

**Consulting Services** – Refer to services for Infrastructure Projects and other types of projects or activities of the GOP requiring adequate external technical and professional expertise that are beyond the capability and/or capacity of the GOP to undertake such as, but not limited to: (i) advisory and review services; (ii) pre-investment or feasibility studies; (iii) design; (iv) construction supervision; (v) management and related services; and (vi) other technical services or special studies. (2016 revised IRR, Section 5[i])

**Contract** – Refers to the agreement entered into between the Procuring Entity and the Supplier or Manufacturer or Distributor or Service Provider for procurement of Goods and Services; Contractor for Procurement of Infrastructure Projects; or Consultant or Consulting Firm for Procurement of Consulting Services; as the case may be, as recorded in the Contract Form signed by the parties, including all attachments and appendices thereto and all documents incorporated by reference therein.

**Contractor** – is a natural or juridical entity whose proposal was accepted by the Procuring Entity and to whom the Contract to execute the Work was awarded. Contractor as used in these Bidding Documents may likewise refer to a supplier, distributor, manufacturer, or consultant.

**CPI** – Consumer Price Index.

**DOLE** – Department of Labor and Employment.

**DTI** – Department of Trade and Industry.

**Foreign-funded Procurement or Foreign-Assisted Project** – Refers to procurement whose funding source is from a foreign government, foreign or international financing institution as

specified in the Treaty or International or Executive Agreement. (2016 revised IRR, Section 5[b]).

**GFI** – Government Financial Institution.

**GOCC** – Government-owned and/or –controlled corporation.

**Goods** – Refer to all items, supplies, materials and general support services, except Consulting Services and Infrastructure Projects, which may be needed in the transaction of public businesses or in the pursuit of any government undertaking, project or activity, whether in the nature of equipment, furniture, stationery, materials for construction, or personal property of any kind, including non-personal or contractual services such as the repair and maintenance of equipment and furniture, as well as trucking, hauling, janitorial, security, and related or analogous services, as well as procurement of materials and supplies provided by the Procuring Entity for such services. The term “related” or “analogous services” shall include, but is not limited to, lease or purchase of office space, media advertisements, health maintenance services, and other services essential to the operation of the Procuring Entity. (2016 revised IRR, Section 5[r])

**GOP** – Government of the Philippines.

**Infrastructure Projects** – Include the construction, improvement, rehabilitation, demolition, repair, restoration or maintenance of roads and bridges, railways, airports, seaports, communication facilities, civil works components of information technology projects, irrigation, flood control and drainage, water supply, sanitation, sewerage and solid waste management systems, shore protection, energy/power and electrification facilities, national buildings, school buildings, hospital buildings, and other related construction projects of the government. Also referred to as *civil works or works*. (2016 revised IRR, Section 5[u])

**LGUs** – Local Government Units.

**NFCC** – Net Financial Contracting Capacity.

**NGA** – National Government Agency.

**PCAB** – Philippine Contractors Accreditation Board.

**PhilGEPS** - Philippine Government Electronic Procurement System.

**Procurement Project** – refers to a specific or identified procurement covering goods, infrastructure project or consulting services. A Procurement Project shall be described, detailed, and scheduled in the Project Procurement Management Plan prepared by the agency which shall be consolidated in the procuring entity's Annual Procurement Plan. (GPPB Circular No. 06-2019 dated 17 July 2019)

**PSA** – Philippine Statistics Authority.

**SEC** – Securities and Exchange Commission.

**SLCC** – Single Largest Completed Contract.

**UN** – United Nations.

## ***Section I. Invitation to Bid***





Republic of the Philippines  
*Department of Education*  
REGION II – CAGAYAN VALLEY  
SCHOOLS DIVISION OF NUEVA VIZCAYA

---

Invitation to Bid for Procurement of **CY 2024 BEFF Repair/Rehabilitation of Classrooms Batch 1**

**PB09-001-SDONV-CY 2024 BEFF REPAIR**

Project ID

1. The Department of Education, Schools Division of Nueva Vizcaya, through the GAA 2024 with SARO OSEC-2-24-5405 intends to apply the sum of **Nine Million Seven Hundred Thousand Pesos and 00/100 (Php 9,700,000.00)** being the Approved Budget for the Contract (ABC) to payments under the contract **CY 2024 BEFF Repair/Rehabilitation of Classrooms Batch 1**. Bids received in excess of the ABC shall be automatically rejected at bid opening.

| <b>LOT/ITEM NO.</b> | <b>NAME OF School</b> | <b>LOCATION</b>        | <b>SCOPE OF WORK</b> | <b>TOTAL ABC (in Php)</b> | <b>Contract Duration in Calendar Days</b> |
|---------------------|-----------------------|------------------------|----------------------|---------------------------|---|
| 1                   | Banganan ES           | Aritao, Nueva Vizcaya  | Repair of Classrooms | 3,400,000.00              | 90  |
| 2                   | Canabuan ES           | Aritao, Nueva Vizcaya  | Repair of Classrooms | 2,900,000.00              | 90  |
| 3                   | Mabuslo ES            | Bambang, Nueva Vizcaya | Repair of Classrooms | 3,400,000.00              | 90  |
| <b>TOTAL</b>        |                       |                        |                      | <b>9,700,000.00</b>       |   |

2. The Department of Education, Schools Division of Nueva Vizcaya now invites bids for the above Procurement Project. Completion of the Works are 90 calendar days each. Bidders should have completed a contract similar to the Project. The description of an eligible bidder is contained in the Bidding Documents, particularly, in Section II (Instructions to Bidders).

3. Bidding will be conducted through open competitive bidding procedures using non- discretionary “pass/fail” criterion as specified in the 2016 revised Implementing Rules and Regulations (IRR) of Republic Act (RA) No. 9184.

4. Interested bidders may obtain further information from the Bids and Awards Committee (BAC) of the Department of Education Schools Division of Nueva Vizcaya and inspect the Bidding Documents at the address given below from Mondays to Fridays during office hours.
5. A complete set of Bidding Documents may be acquired by interested bidders on September 25, 2024 to October 14, 2024 from given address and website/s below and upon payment of the applicable fee for the Bidding Documents, pursuant to the latest Guidelines issued by the GPPB, in the amount of Five thousand Pesos (Php 5,000.00) for each Lot. The Procuring Entity shall allow the bidder to present its proof of payment for the fees in person or online.
6. The DepEd Schools Division of Nueva Vizcaya will hold a Pre-Bid Conference<sup>1</sup> on October 3, 2024, 9:00 AM in the morning at the Conference Hall of the Schools Division Office of Nueva Vizcaya, Don Domingo Maddela, Bayombong, Nueva Vizcaya, which shall be open to prospective bidders.
7. Bids must be duly received by the BAC Secretariat through manual submission of hard copy at the office address as indicated below on or before 9:00 AM in the morning of October 14, 2024. Late bids shall not be accepted.
8. All bids must be accompanied by a bid security in any of the acceptable forms and in the amount stated in **ITB** Clause 15.
9. Bid opening shall be 9:30 AM of October 14, 2024 at SDO Conference Hall, of the Schools Division Office of Nueva Vizcaya, Don Domingo Maddela, Bayombong, Nueva Vizcaya through face to face. Bids will be opened in the presence of the bidders' representatives who choose to attend the activity.
10. The DepEd Schools Division of Nueva Vizcaya reserves the right to reject any and all bids, declare a failure of bidding, or not award the contract at any time prior to contract award in accordance with Sections 35.6 and 41 of the 2016 revised Implementing Rules and Regulations (IRR) of RA No. 9184, without thereby incurring any liability to the affected bidder or bidders.
11. For further information, please refer to:

**MARIA LICEL T. BALICO**

Chairperson, BAC Secretariat

**ADONIS C. CEPEREZ EdD, CESE**

Chairman, Bids and Awards Committee

Schools Division of Nueva Vizcaya

Don Domingo Maddela, Bayombong, Nueva Vizcaya

12. You may visit the following websites: For downloading of Bidding Documents:  
[www.philgeps.gov.ph](http://www.philgeps.gov.ph); <https://sdonuevavizcaya.com>



## ***Section II. Instructions to Bidders***

## 1. Scope of Bid

The Procuring Entity, DepEd Schools Division of Nueva Vizcaya invites Bids for the procurement of projects under **CY 2024 BEFF Repair/Rehabilitation of Classrooms Batch 1**

The Procurement Project: is for the construction of Works, as described in Section VI (Specifications).

## 2.

| LOT/ITEM NO. | Name of School | LOCATION               | SCOPE OF WORK        | Contract Duration in Calendar Days |
|--------------|----------------|------------------------|----------------------|------------------------------------|
| 1            | Banganan ES    | Aritao, Nueva Vizcaya  | Repair of Classrooms | 90                                 |
| 2            | Canabuan ES    | Aritao, Nueva Vizcaya  | Repair of Classrooms | 90                                 |
| 3            | Mabuslo ES     | Bambang, Nueva Vizcaya | Repair of Classrooms | 90                                 |

## Funding Information

2.1. The GOP through the source of funding as indicated below for **CY 2024 BEFF Repair/Rehabilitation of Classrooms Batch 1** in the amount of **Nine Million Seven Hundred Thousand Pesos and 00/100 (Php 9,700,000.00)**

2.2. The source of funding is: SARO OSEC-2-24-5405

## 3. Bidding Requirements

The Bidding for the Project shall be governed by all the provisions of RA No. 9184 and its 2016 revised IRR, including its Generic Procurement Manual and associated policies, rules and regulations as the primary source thereof, while the herein clauses shall serve as the secondary source thereof.

Any amendments made to the IRR and other GPPB issuances shall be applicable only to the ongoing posting, advertisement, or invitation to bid by the BAC through the issuance of a supplemental or bid bulletin.

The Bidder, by the act of submitting its Bid, shall be deemed to have inspected the site, determined the general characteristics of the contracted Works and the conditions for this Project, such as the location and the nature of the work; (b) climatic conditions; (c) transportation facilities; (c) nature and condition of the terrain, geological conditions at the site communication facilities, requirements, location and availability of construction

aggregates and other materials, labor, water, electric power and access roads; and (d) other factors that may affect the cost, duration and execution or implementation of the contract, project, or work and examine all instructions, forms, terms, and project requirements in the Bidding Documents.

#### **4. Corrupt, Fraudulent, Collusive, Coercive, and Obstructive Practices**

The Procuring Entity, as well as the Bidders and Contractors, shall observe the highest standard of ethics during the procurement and execution of the contract. They or through an agent shall not engage in corrupt, fraudulent, collusive, coercive, and obstructive practices defined under Annex "I" of the 2016 revised IRR of RA No. 9184 or other integrity violations in competing for the Project.

## 5. Eligible Bidders

- 5.1. Only Bids of Bidders found to be legally, technically, and financially capable will be evaluated.
- 5.2. The Bidder must have an experience of having completed a Single Largest Completed Contract (SLCC) that is similar to this Project within the last three (3) years, equivalent to at least fifty percent (50%) of the ABC adjusted, if necessary, by the Bidder to current prices using the PSA's CPI, except under conditions provided for in Section 23.4.2.4 of the 2016 revised IRR of RA No. 9184.  
  
A contract is considered to be "similar" to the contract to be bid if it has the major categories of work stated in the **BDS**.
- 5.3. For Foreign-funded Procurement, the Procuring Entity and the foreign government/foreign or international financing institution may agree on another track record requirement, as specified in the Bidding Document prepared for this purpose.
- 5.4. The Bidders shall comply with the eligibility criteria under Section 23.4.2 of the 2016 IRR of RA No. 9184.

## 6. Origin of Associated Goods

There is no restriction on the origin of Goods other than those prohibited by a decision of the UN Security Council taken under Chapter VII of the Charter of the UN.

## 7. Subcontracts

- 7.1. The Bidder may subcontract portions of the Project to the extent allowed by the Procuring Entity as stated herein, but in no case more than fifty percent (50%) of the Project.

The Procuring Entity has prescribed that:

Subcontracting is **NOT** allowed.

- 7.1. The Bidder must submit together with its Bid the documentary requirements of the subcontractor(s) complying with the eligibility criteria stated in **ITB** Clause 5 in accordance with Section 23.4 of the 2016 revised IRR of RA No. 9184 pursuant to Section 23.1 thereof.
- 7.2. The Supplier may identify its subcontractor during the contract implementation stage. Subcontractors identified during the bidding may be changed during the implementation of this Contract. Subcontractors must submit the documentary requirements under Section 23.1 of the 2016 revised IRR of RA No. 9184 and comply with the eligibility criteria specified in **ITB** Clause 5 to the implementing or end-user unit.

- 7.3. Subcontracting of any portion of the Project does not relieve the Contractor of any liability or obligation under the Contract. The Supplier will be responsible for the acts, defaults, and negligence of any subcontractor, its agents, servants, or workmen as fully as if these were the Contractor's own acts, defaults, or negligence, or those of its agents, servants, or workmen.

## **8. Pre-Bid Conference**

The Procuring Entity will hold a pre-bid conference for this Project on the specified date and time and either at its physical address and/or through videoconferencing/webcasting} as indicated in paragraph 6 of the **IB**.

## **9. Clarification and Amendment of Bidding Documents**

Prospective bidders may request for clarification on and/or interpretation of any part of the Bidding Documents. Such requests must be in writing and received by the Procuring Entity, either at its given address or through electronic mail indicated in the **IB**, at least ten (10) calendar days before the deadline set for the submission and receipt of Bids.

## **10. Documents Comprising the Bid: Eligibility and Technical Components**

- 10.1. The first envelope shall contain the eligibility and technical documents of the Bid as specified in **Section IX. Checklist of Technical and Financial Documents**.
- 10.2. If the eligibility requirements or statements, the bids, and all other documents for submission to the BAC are in foreign language other than English, it must be accompanied by a translation in English, which shall be authenticated by the appropriate Philippine foreign service establishment, post, or the equivalent office having jurisdiction over the foreign bidder's affairs in the Philippines. For Contracting Parties to the Apostille Convention, only the translated documents shall be authenticated through an apostille pursuant to GPPB Resolution No. 13-2019 dated 23 May 2019. The English translation shall govern, for purposes of interpretation of the bid.
- 10.3. A valid PCAB License is required, and in case of joint ventures, a valid special PCAB License, and registration for the type and cost of the contract for this Project. Any additional type of Contractor license or permit shall be indicated in the **BDS**.
- 10.4. A List of Contractor's key personnel (e.g., Project Manager, Project Engineers, Materials Engineers, and Foremen) assigned to the contract to be bid, with their complete qualification and experience data shall be provided. These key personnel must meet the required minimum years of experience set in the **BDS**.
- 10.5. A List of Contractor's major equipment units, which are owned, leased, and/or under purchase agreements, supported by proof of ownership, certification of availability of equipment from the equipment lessor/vendor for the duration of



the project, as the case may be, must meet the minimum requirements for the contract set in the **BDS**.

## **11. Documents Comprising the Bid: Financial Component**

- 11.1. The second bid envelope shall contain the financial documents for the Bid as specified in **Section IX. Checklist of Technical and Financial Documents**.
- 11.2. Any bid exceeding the ABC indicated in paragraph 1 of the **IB** shall not be accepted.
- 11.3. For Foreign-funded procurement, a ceiling may be applied to bid prices provided the conditions are met under Section 31.2 of the 2016 revised IRR of RA No. 9184.

## **12. Alternative Bids**

Bidders shall submit offers that comply with the requirements of the Bidding Documents, including the basic technical design as indicated in the drawings and specifications. Unless there is a value engineering clause in the **BDS**, alternative Bids shall not be accepted.

## **13. Bid Prices**

All bid prices for the given scope of work in the Project as awarded shall be considered as fixed prices, and therefore not subject to price escalation during contract implementation, except under extraordinary circumstances as determined by the NEDA and approved by the GPPB pursuant to the revised Guidelines for Contract Price Escalation guidelines.

## **14. Bid and Payment Currencies**

- 14.1. Bid prices may be quoted in the local currency or tradeable currency accepted by the BSP at the discretion of the Bidder. However, for purposes of bid evaluation, Bids denominated in foreign currencies shall be converted to Philippine currency based on the exchange rate as published in the BSP reference rate bulletin on the day of the bid opening.
- 14.2. *Payment of the contract price shall be made in:*

Philippine Pesos.

## **15. Bid Security**

- 15.1. The Bidder shall submit a Bid Securing Declaration or any form of Bid Security in the amount indicated in the **BDS**, which shall be not less than the percentage of the ABC in accordance with the schedule in the **BDS**.
- 15.2. The Bid and bid security shall be valid until **January 14, 2025**. Any bid not accompanied by an acceptable bid security shall be rejected by the Procuring Entity as non-responsive.

## **16. Sealing and Marking of Bids**

Each Bidder shall submit one copy of the first and second components of its Bid.

The Procuring Entity may request additional hard copies and/or electronic copies of the Bid. However, failure of the Bidders to comply with the said request shall not be a ground for disqualification.

If the Procuring Entity allows the submission of bids through online submission to the given website or any other electronic means, the Bidder shall submit an electronic copy of its Bid, which must be digitally signed. An electronic copy that cannot be opened or is corrupted shall be considered non-responsive and, thus, automatically disqualified.

## **17. Deadline for Submission of Bids**

The Bidders shall submit on the specified date and time and either at its physical address or through online submission as indicated in paragraph 7 of the **IB**.

## **18. Opening and Preliminary Examination of Bids**

- 18.1. The BAC shall open the Bids in public at the time, on the date, and at the place specified in paragraph 9 of the **IB**. The Bidders' representatives who are present shall sign a register evidencing their attendance. In case videoconferencing, webcasting or other similar technologies will be used, attendance of participants shall likewise be recorded by the BAC Secretariat.

In case the Bids cannot be opened as scheduled due to justifiable reasons, the rescheduling requirements under Section 29 of the 2016 revised IRR of RA No. 9184 shall prevail.

- 18.2. The preliminary examination of Bids shall be governed by Section 30 of the 2016 revised IRR of RA No. 9184.

## **19. Detailed Evaluation and Comparison of Bids**

- 19.1. The Procuring Entity's BAC shall immediately conduct a detailed evaluation of all Bids rated "*passed*" using non-discretionary pass/fail criteria. The BAC shall consider the conditions in the evaluation of Bids under Section 32.2 of 2016 revised IRR of RA No. 9184.

- 19.2. If the Project allows partial bids, all Bids and combinations of Bids as indicated in the **BDS** shall be received by the same deadline and opened and evaluated simultaneously so as to determine the Bid or combination of Bids offering the lowest calculated cost to the Procuring Entity. Bid Security as required by **ITB** Clause 16 shall be submitted for each contract (lot) separately.
- 19.3. In all cases, the NFCC computation pursuant to Section 23.4.2.6 of the 2016 revised IRR of RA No. 9184 must be sufficient for the total of the ABCs for all the lots participated in by the prospective Bidder.

## **20. Post Qualification**

Within a non-extendible period of five (5) calendar days from receipt by the Bidder of the notice from the BAC that it submitted the Lowest Calculated Bid, the Bidder shall submit its latest income and business tax returns filed and paid through the BIR Electronic Filing and Payment System (eFPS), and other appropriate licenses and permits required by law and stated in the **BDS**.

## **21. Signing of the Contract**

The documents required in Section 37.2 of the 2016 revised IRR of RA No. 9184 shall form part of the Contract. Additional Contract documents are indicated in the **BDS**.

## *Section III. Bid Data Sheet*

# Bid Data Sheet

| ITB Clause           |  |                            |                           |                            |                      |  |                           |                     |  |                           |                 |  |                           |            |  |                           |                |  |                           |                 |  |                           |         |  |                           |         |  |                           |        |  |                           |
|----------------------|--|----------------------------|---------------------------|----------------------------|----------------------|--|---------------------------|---------------------|--|---------------------------|-----------------|--|---------------------------|------------|--|---------------------------|----------------|--|---------------------------|-----------------|--|---------------------------|---------|--|---------------------------|---------|--|---------------------------|--------|--|---------------------------|
| 5.2                  | For this purpose, contracts similar to the Project refer to contracts which have the same major categories of work, which shall be:<br>Repair and Rehabilitation of Classrooms   |                            |                           |                            |                      |  |                           |                     |  |                           |                 |  |                           |            |  |                           |                |  |                           |                 |  |                           |         |  |                           |         |  |                           |        |  |                           |
| 10.4                 | The key personnel must meet the required minimum years of experience set below:<br><table border="1" style="width: 100%; border-collapse: collapse;"> <thead> <tr> <th style="text-align: left;"><u>Key Personnel</u></th> <th style="text-align: left;"><u>General Experience</u></th> <th style="text-align: left;"><u>Relevant Experience</u></th> </tr> </thead> <tbody> <tr> <td>Project Engr.</td> <td></td> <td>Three (3) year experience</td> </tr> <tr> <td>Electrical Engineer</td> <td></td> <td>Three (3) year experience</td> </tr> <tr> <td>General Foreman</td> <td></td> <td>Three (3) year experience</td> </tr> <tr> <td>Welder</td> <td></td> <td>Three (3) year experience</td> </tr> <tr> <td>Safety Officer</td> <td></td> <td>Three (3) year experience</td> </tr> <tr> <td>Carpenter</td> <td></td> <td>Three (3) year experience</td> </tr> <tr> <td>Mason</td> <td></td> <td>Three (3) year experience</td> </tr> <tr> <td>Painter</td> <td></td> <td>Three (3) year experience</td> </tr> <tr> <td>Helper</td> <td></td> <td>Three (3) year experience</td> </tr> </tbody> </table> | <u>Key Personnel</u>       | <u>General Experience</u> | <u>Relevant Experience</u> | Project Engr.        |  | Three (3) year experience | Electrical Engineer |  | Three (3) year experience | General Foreman |  | Three (3) year experience | Welder     |  | Three (3) year experience | Safety Officer |  | Three (3) year experience | Carpenter       |  | Three (3) year experience | Mason   |  | Three (3) year experience | Painter |  | Three (3) year experience | Helper |  | Three (3) year experience |
| <u>Key Personnel</u> | <u>General Experience</u>  | <u>Relevant Experience</u> |                           |                            |                      |  |                           |                     |  |                           |                 |  |                           |            |  |                           |                |  |                           |                 |  |                           |         |  |                           |         |  |                           |        |  |                           |
| Project Engr.        |  | Three (3) year experience  |                           |                            |                      |  |                           |                     |  |                           |                 |  |                           |            |  |                           |                |  |                           |                 |  |                           |         |  |                           |         |  |                           |        |  |                           |
| Electrical Engineer  |  | Three (3) year experience  |                           |                            |                      |  |                           |                     |  |                           |                 |  |                           |            |  |                           |                |  |                           |                 |  |                           |         |  |                           |         |  |                           |        |  |                           |
| General Foreman      |  | Three (3) year experience  |                           |                            |                      |  |                           |                     |  |                           |                 |  |                           |            |  |                           |                |  |                           |                 |  |                           |         |  |                           |         |  |                           |        |  |                           |
| Welder               |  | Three (3) year experience  |                           |                            |                      |  |                           |                     |  |                           |                 |  |                           |            |  |                           |                |  |                           |                 |  |                           |         |  |                           |         |  |                           |        |  |                           |
| Safety Officer       |  | Three (3) year experience  |                           |                            |                      |  |                           |                     |  |                           |                 |  |                           |            |  |                           |                |  |                           |                 |  |                           |         |  |                           |         |  |                           |        |  |                           |
| Carpenter            |  | Three (3) year experience  |                           |                            |                      |  |                           |                     |  |                           |                 |  |                           |            |  |                           |                |  |                           |                 |  |                           |         |  |                           |         |  |                           |        |  |                           |
| Mason                |  | Three (3) year experience  |                           |                            |                      |  |                           |                     |  |                           |                 |  |                           |            |  |                           |                |  |                           |                 |  |                           |         |  |                           |         |  |                           |        |  |                           |
| Painter              |  | Three (3) year experience  |                           |                            |                      |  |                           |                     |  |                           |                 |  |                           |            |  |                           |                |  |                           |                 |  |                           |         |  |                           |         |  |                           |        |  |                           |
| Helper               |  | Three (3) year experience  |                           |                            |                      |  |                           |                     |  |                           |                 |  |                           |            |  |                           |                |  |                           |                 |  |                           |         |  |                           |         |  |                           |        |  |                           |
| 10.5                 | The minimum major equipment requirements are the following:<br><table border="1" style="width: 100%; border-collapse: collapse;"> <thead> <tr> <th style="text-align: left;"><u>Equipment</u></th> <th style="text-align: left;"><u>Capacity</u></th> <th style="text-align: left;"><u>Number of Units</u></th> </tr> </thead> <tbody> <tr> <td>Power and Hand Tools</td> <td></td> <td style="text-align: center;">3</td> </tr> <tr> <td>1 Bagger Mixer</td> <td></td> <td style="text-align: center;">1</td> </tr> <tr> <td>Welding Machine</td> <td></td> <td style="text-align: center;">1</td> </tr> <tr> <td>Bar Cutter</td> <td></td> <td style="text-align: center;">3</td> </tr> <tr> <td>Dump truck</td> <td></td> <td style="text-align: center;">1</td> </tr> <tr> <td>Service Vehicle</td> <td></td> <td style="text-align: center;">1</td> </tr> <tr> <td>Backhoe</td> <td></td> <td style="text-align: center;">1</td> </tr> </tbody> </table>  | <u>Equipment</u>           | <u>Capacity</u>           | <u>Number of Units</u>     | Power and Hand Tools |  | 3                         | 1 Bagger Mixer      |  | 1                         | Welding Machine |  | 1                         | Bar Cutter |  | 3                         | Dump truck     |  | 1                         | Service Vehicle |  | 1                         | Backhoe |  | 1                         |         |  |                           |        |  |                           |
| <u>Equipment</u>     | <u>Capacity</u>  | <u>Number of Units</u>     |                           |                            |                      |  |                           |                     |  |                           |                 |  |                           |            |  |                           |                |  |                           |                 |  |                           |         |  |                           |         |  |                           |        |  |                           |
| Power and Hand Tools |  | 3                          |                           |                            |                      |  |                           |                     |  |                           |                 |  |                           |            |  |                           |                |  |                           |                 |  |                           |         |  |                           |         |  |                           |        |  |                           |
| 1 Bagger Mixer       |  | 1                          |                           |                            |                      |  |                           |                     |  |                           |                 |  |                           |            |  |                           |                |  |                           |                 |  |                           |         |  |                           |         |  |                           |        |  |                           |
| Welding Machine      |  | 1                          |                           |                            |                      |  |                           |                     |  |                           |                 |  |                           |            |  |                           |                |  |                           |                 |  |                           |         |  |                           |         |  |                           |        |  |                           |
| Bar Cutter           |  | 3                          |                           |                            |                      |  |                           |                     |  |                           |                 |  |                           |            |  |                           |                |  |                           |                 |  |                           |         |  |                           |         |  |                           |        |  |                           |
| Dump truck           |  | 1                          |                           |                            |                      |  |                           |                     |  |                           |                 |  |                           |            |  |                           |                |  |                           |                 |  |                           |         |  |                           |         |  |                           |        |  |                           |
| Service Vehicle      |  | 1                          |                           |                            |                      |  |                           |                     |  |                           |                 |  |                           |            |  |                           |                |  |                           |                 |  |                           |         |  |                           |         |  |                           |        |  |                           |
| Backhoe              |  | 1                          |                           |                            |                      |  |                           |                     |  |                           |                 |  |                           |            |  |                           |                |  |                           |                 |  |                           |         |  |                           |         |  |                           |        |  |                           |
| 12                   | <i>No further instructions</i>   |                            |                           |                            |                      |  |                           |                     |  |                           |                 |  |                           |            |  |                           |                |  |                           |                 |  |                           |         |  |                           |         |  |                           |        |  |                           |
| 15.1                 | The bid security shall be in the form of a Bid Securing Declaration or any of the following forms and amounts:<br><p style="margin-left: 40px;">a. The amount of not less than <i>two percent 2% of ABC</i>, if bid security is in cash, cashier's/manager's check, bank draft/guarantee or irrevocable letter of credit;</p> <p style="margin-left: 40px;">b. The amount of not less than <i>five percent 5% of ABC</i> if bid security is in Surety Bond.</p>  |                            |                           |                            |                      |  |                           |                     |  |                           |                 |  |                           |            |  |                           |                |  |                           |                 |  |                           |         |  |                           |         |  |                           |        |  |                           |
| 19.2                 | Partial bids are allowed, as follows:<br>Partial Bids Not Allowed  |                            |                           |                            |                      |  |                           |                     |  |                           |                 |  |                           |            |  |                           |                |  |                           |                 |  |                           |         |  |                           |         |  |                           |        |  |                           |
| 20                   | No additional Licenses Required  |                            |                           |                            |                      |  |                           |                     |  |                           |                 |  |                           |            |  |                           |                |  |                           |                 |  |                           |         |  |                           |         |  |                           |        |  |                           |

|    |   |
|----|---|
| 21 | Additional contract documents relevant to the Project that may be required by existing laws and/or the Procuring Entity, such as construction schedule and S-curve, manpower schedule, construction methods, equipment utilization schedule, construction safety and health program approved by the DOLE, CARI, and other acceptable tools of project scheduling. |
|----|---|

## ***Section IV. General Conditions of Contract***

## 1. **Scope of Contract**

This Contract shall include all such items, although not specifically mentioned, that can be reasonably inferred as being required for its completion as if such items were expressly mentioned herein. All the provisions of RA No. 9184 and its 2016 revised IRR, including the Generic Procurement Manual, and associated issuances, constitute the primary source for the terms and conditions of the Contract, and thus, applicable in contract implementation. Herein clauses shall serve as the secondary source for the terms and conditions of the Contract.

This is without prejudice to Sections 74.1 and 74.2 of the 2016 revised IRR of RA No. 9184 allowing the GPPB to amend the IRR, which shall be applied to all procurement activities, the advertisement, posting, or invitation of which were issued after the effectivity of the said amendment.

## 2. **Sectional Completion of Works**

If sectional completion is specified in the **Special Conditions of Contract (SCC)**, references in the Conditions of Contract to the Works, the Completion Date, and the Intended Completion Date shall apply to any Section of the Works (other than references to the Completion Date and Intended Completion Date for the whole of the Works).

## 3. **Possession of Site**

3.1 The Procuring Entity shall give possession of all or parts of the Site to the Contractor based on the schedule of delivery indicated in the **SCC**, which corresponds to the execution of the Works. If the Contractor suffers delay or incurs cost from failure on the part of the Procuring Entity to give possession in accordance with the terms of this clause, the Procuring Entity's Representative shall give the Contractor a Contract Time Extension and certify such sum as fair to cover the cost incurred, which sum shall be paid by Procuring Entity.

3.2 If possession of a portion is not given by the above date, the Procuring Entity will be deemed to have delayed the start of the relevant activities. The resulting adjustments in contract time to address such delay may be addressed through contract extension provided under Annex "E" of the 2016 revised IRR of RA No. 9184.

## 4. **The Contractor's Obligations**

The Contractor shall employ the key personnel named in the Schedule of Key Personnel indicating their designation, in accordance with **ITB** Clause 10.3 and specified in the **BDS**, to carry out the supervision of the Works.

The Procuring Entity will approve any proposed replacement of key personnel only if their relevant qualifications and abilities are equal to or better than those of the personnel listed in the Schedule.



## **5. Performance Security**

- 5.1. Within ten (10) calendar days from receipt of the Notice of Award from the Procuring Entity but in no case later than the signing of the contract by both parties, the successful Bidder shall furnish the performance security in any of the forms prescribed in Section 39 of the 2016 revised IRR.
- 5.2. The Contractor, by entering into the Contract with the Procuring Entity, acknowledges the right of the Procuring Entity to institute action pursuant to RA No. 3688 against any subcontractor be they an individual, firm, partnership, corporation, or association supplying the Contractor with labor, materials and/or equipment for the performance of this Contract.

## **6. Site Investigation Reports**

The Contractor, in preparing the Bid, shall rely on any Site Investigation Reports referred to in the SCC supplemented by any information obtained by the Contractor.

## **7. Warranty**

- 7.1. In case the Contractor fails to undertake the repair works under Section 62.2.2 of the 2016 revised IRR, the Procuring Entity shall forfeit its performance security, subject its property(ies) to attachment or garnishment proceedings, and perpetually disqualify it from participating in any public bidding. All payables of the GOP in his favor shall be offset to recover the costs.
- 7.2. The warranty against Structural Defects/Failures, except that occasioned-on force majeure, shall cover the period from the date of issuance of the Certificate of Final Acceptance by the Procuring Entity. Specific duration of the warranty is found in the SCC.

## **8. Liability of the Contractor**

Subject to additional provisions, if any, set forth in the SCC, the Contractor's liability under this Contract shall be as provided by the laws of the Republic of the Philippines.

If the Contractor is a joint venture, all partners to the joint venture shall be jointly and severally liable to the Procuring Entity.

## **9. Termination for Other Causes**

Contract termination shall be initiated in case it is determined *prima facie* by the Procuring Entity that the Contractor has engaged, before, or during the implementation of the contract, in unlawful deeds and behaviors relative to contract acquisition and implementation, such as, but not limited to corrupt, fraudulent, collusive, coercive, and obstructive practices as stated in ITB Clause 4.

## **10. Dayworks**

Subject to the guidelines on Variation Order in Annex “E” of the 2016 revised IRR of RA No. 9184, and if applicable as indicated in the SCC, the Dayworks rates in the Contractor’s Bid shall be used for small additional amounts of work only when the Procuring Entity’s Representative has given written instructions in advance for additional work to be paid for in that way.

## **11. Program of Work**

11.1. The Contractor shall submit to the Procuring Entity’s Representative for approval the said Program of Work showing the general methods, arrangements, order, and timing for all the activities in the Works. The submissions of the Program of Work are indicated in the SCC.

11.2. The Contractor shall submit to the Procuring Entity’s Representative for approval an updated Program of Work at intervals no longer than the period stated in the SCC. If the Contractor does not submit an updated Program of Work within this period, the Procuring Entity’s Representative may withhold the amount stated in the SCC from the next payment certificate and continue to withhold this amount until the next payment after the date on which the overdue Program of Work has been submitted.

## **12. Instructions, Inspections and Audits**

The Contractor shall permit the GOP or the Procuring Entity to inspect the Contractor’s accounts and records relating to the performance of the Contractor and to have them audited by auditors of the GOP or the Procuring Entity, as may be required.

## **13. Advance Payment**

The Procuring Entity shall, upon a written request of the Contractor which shall be submitted as a Contract document, make an advance payment to the Contractor in an amount not exceeding fifteen percent (15%) of the total contract price, to be made in lump sum, or at the most two installments according to a schedule specified in the SCC, subject to the requirements in Annex “E” of the 2016 revised IRR of RA No. 9184.

## **14. Progress Payments**

The Contractor may submit a request for payment for Work accomplished. Such requests for payment shall be verified and certified by the Procuring Entity’s Representative/Project Engineer. Except as otherwise stipulated in the SCC, materials and equipment delivered on the site but not completely put in place shall not be included for payment.

## **15. Operating and Maintenance Manuals**

- 15.1. If required, the Contractor will provide “as built” Drawings and/or operating and maintenance manuals as specified in the **SCC**.
- 15.2. If the Contractor does not provide the Drawings and/or manuals by the dates stated above, or they do not receive the Procuring Entity’s Representative’s approval, the Procuring Entity’s Representative may withhold the amount stated in the **SCC** from payments due to the Contractor.

## ***Section V. Special Conditions of Contract***

# Special Conditions of Contract

| GCC Clause |   |                        |                      |                                    |
|------------|---|------------------------|----------------------|------------------------------------|
| 2          | <i>Completion Dates:</i>  |                        |                      |                                    |
|            | School  | Location               | SCOPE OF WORK        | Contract Duration in Calendar Days |
| 1          | Banganan ES   | Aritao, Nueva Vizcaya  | Repair of Classrooms | 90                                 |
| 2          | Canabuan ES   | Aritao, Nueva Vizcaya  | Repair of Classrooms | 90                                 |
| 3          | Mabuslo ES  | Bambang, Nueva Vizcaya | Repair of Classrooms | 90                                 |
| 4          | <i>Upon Receipt of the Notice to Proceed</i>  |                        |                      |                                    |
| 6          | The site investigation reports are: <i>As Indicated in the BOQ.</i>   |                        |                      |                                    |
| 7.2        | Fifteen (15) years.   |                        |                      |                                    |
| 10         | Dayworks are applicable at the rate shown in the Contractor's original Bid.   |                        |                      |                                    |
| 11.1       | The Contractor shall submit the Program of Work to the Procuring Entity's Representative within <i>10 calendar</i> days of delivery of the Notice of Award. |                        |                      |                                    |
| 11.2       | The amount to be withheld for late submission of an updated Program of Work is None.  |                        |                      |                                    |

# *Section VI. Specifications*



REPUBLIC OF THE PHILIPPINES  
DEPARTMENT OF EDUCATION  
EDUCATION FACILITIES DIVISION  
DepEd Complex, Meralco Avenue, Pasig City, Philippines



## TECHNICAL SPECIFICATIONS

Project : Repair/ Rehabilitation of Classrooms

Location : Banganan Elementary School, Aritao, Nueva Vizcaya  
Canabuan Elementary School, Aritao, Nueva Vizcaya  
Mabuslo Elementary School, Bambang, Nueva Vizcaya

Prepared by : CHRISTOPHER R. DOMINGUEZ  
Technical Assistant III/Architect II

Approved by: ORLANDO E. MANUEL, PhD, CESO V  
Schools Division Superintendent  
SDO Nueva Vizcaya

## ELECTRICAL WORKS

### I. GENERAL PROVISIONS:

#### A. WORK DESCRIPTION, GENERAL:

- The work to be done under this specification consist of fabrication, complete details of the electrical works at the subject premises and all work and materials incidental to the proper completion of the installation except those portion of the work which are expressly stated to be done by others.
- All works shall be in accordance with governing codes and regulations and with the specifications.
- The requirements with regards to materials and workmanship specify the required standards for the furnishing of all labor, materials, and appliances necessary for the complete installation of the work specified herein and indicated on the drawings.
- These specifications are intended to provide a broad outline of the required installation but are not intended to include all details of design and construction.

#### B. CODES, INSPECTION, PERMITS AND FEES

- The work under this contract is to be installed according to the latest requirements of the following:
  1. Philippine National Building Code
  2. Philippine Electrical Code
  3. Electric Cooperative in that areas
- All construction permits and fees required for these works shall obtain by and at the expense of the Contractor. The Contractor shall furnish the Architect, the Engineers and the Owner of the final certificate of inspection and approval from the concerned government authorities after the completion of the work. The Contractor shall prepare all shop drawings, as-built plans and other paper work required by the approving authorities.
- The Contractor shall secure approval from authorities of all plans for construction.

#### C. RECORD OF DRAWINGS

- The contractor shall record all deviations of the actual installation based on the contract drawings. Upon completion of work, the Contractor shall submit two copies of the as-built drawings indicating the work installed and finished including new information (revisions) not originally shown in the contract drawings to the Engineers for the approval as to conformance with the design concepts and compliance with pertinent code provisions. After such approval, the Contractor shall submit the as-built drawings original to the Owner.

#### D. COORDINATION



- Coordinate timing of installation with work of other trades.
- Systems provided shall be completed and operable and shall include required accessories fastenings and supports.
- Determine required locations, arrangements and quantities of equipment and materials from drawings, schedules and specifications.
- All equipment shall be installed in strict compliance with manufacturer's recommendations.
- On certain items of equipment specified on other contracts requiring electrical connections, the Contractor shall provide such connections as required.

E. MINOR MODIFICATIONS

- The plans as drawn are based upon architectural plans and details. Show conditions as accurately as possible to indicate them to scale. The plans do not show all fittings necessary to fit the building conditions. The location of outlets, apparatus, and equipment shown on the plan are just approximated. The Contractor shall be responsible for the proper location in order to make them fit, with architectural details and instructions from engineers representative at the site.

F. GUARANTEE

- The Contractor shall guarantee that the electrical system is free from all grounds, from all-defective workmanship and materials that will remain in good condition for a period of one year from the date of acceptance of work. This Contractor at his own expense shall repair any defects appearing within the aforementioned period.
- The Contractor shall indemnify and save the Owner, the Architect and the Engineers from and against all liability for damage arising from injuries or disabilities to persons or damage to property occasioned by an act or omissions of the Contractor or any of his subcontractors including any and all expenses, legal or otherwise which maybe incurred by the Owner, the Architect or the Engineers in the defense of any claim, action and suit.

G. APPROVALS, SUBSTITUTIONS, Etc.

- Wherever hereafter the word "Approval" or "Approved" (make, type, size, arrangement, etc.) are used specifically with regard to manufactured items, etc., or wherever it is desired to substitute a different make or type, all information pertinent to the adequacy and adaptability of the proposed apparatus, shall be submitted to the engineers for their approval before the apparatus is ordered or installed.

H. SUB-CONTRACTS, Etc.

- This Contractor shall be held fully responsible for the work of any sub-contractor or manufacturer performing work for or supplying materials as it is intended that the entire electrical work when finally delivered to



the Owner shall be ready in every respect for satisfactory and efficient operation.

I. WORKMANSHIP

- The work throughout shall be executed in the best and most thorough manner to the satisfaction of the Architect and Engineers, who will jointly interpret the meaning of the drawings and specifications and shall have power to reject any works and materials which in their judgement are not fully in accordance therewith.

II BASIC MATERIALS AND METHODS

A. GENERAL

- Furnish and install all conduits, joints, outlet boxes, wires and miscellaneous materials required for wiring, as specified herein and as shown on drawings.
- Furnish and install all power and control wiring to all equipment except as otherwise specified.
- Perform test and adjustments and submit specific reports herein.

B. POLYVINYLCHLORIDE CONDUIT

- General: Standard trade size, heavy wall, manufactured to NEMA TC - 2 type rated for 90-degree C cable.
- Materials: Polyvinyl chloride conduit extruded use Atlanta or approved equivalent.
- Nominal Size: 20mm diameter minimum.
- Couplings and Fittings:
- Use Limitations  
As specified in the latest edition of the PEC.  
Not permitted where subject to mechanical damage
- Pulling Hardware: flat fish tape with ball and flexible leather or polyethylene or manila rope. Use of steel pulling cable not permitted.

C. CONDUIT INSTALLATION

- General: Install in accordance with applicable codes and recognized standard of good practice.
- Actual routing subject to approval
- Joints: Make with approved couplings and unions to provide electrically continuous and moisture tight systems.

D. CONDUCTOR INSTALLATION

- Place all wiring, in a raceway or types indicated. Provide all required and indicated accessories for proper installation of all wiring
- Splicing:  
Permissible only in junction boxes or similar accessible location. Number of splices held to absolute minimum.

E. DISTRIBUTION PANEL BOARD-FUSIBLE SWITCH

- General: Furnish and install distribution and power panel boards as indicated in the panel board schedule and where shown on the drawings. Panel boards shall be dead front safety types, equipped with quick-break fusible branch switches and approved for service entrance. The acceptable manufacturers of the panel board are General Electric and Square "D" or approved equal.
- Fusible switches: All fusible branch switches shall be quick-make, quick-break, with visible blades and dual horsepower ratings. Switch handles shall physically indicate ON and OFF position. Such handles shall be able to accept three padlocks having heavy duty industrial type shackles. Covers shall be interlocked with the switch handles to prevent opening in the ON position. A means shall be provided to allow authorized personnel to release the interlock for inspection purposes when a switch is ON. A cardholder providing circuit identification shall be mounted on each branch switch. Switches shall be provided with a Bussman Fusetron fuses or as noted on the drawings.
- Bussing Assembly: Panel board bus structure and main lugs or main switch shall have current ratings as shown on the board schedule. The bus structure shall accommodate plug-on or bolted branch switches and motor starters as indicated in the panel board schedule without modification to the bus assembly. Provide solid neutral (S/N) assembly when required.
- Equipment Rating: Switches and panel board bus structure shall be safe and without failure withstand short circuits on the systems capable of delivering up to 50,000 amperes RMS symmetrical, unless otherwise noted.
- Cabinet: Panel board assembly shall be enclosed in a steel cabinet. The rigidity and gauge of steel is to be as specified in UL Standard for Cabinets. The size of wiring gutters shall be in accordance with UL Standard. Cabinets shall be equipped with a front door and shall be full finish steel with rust inhibiting primer and baked enamel finish.

F. PANEL AND BOX

- Box, plain steel front, complete with hinged door, polished metal catch and lock Manufacturer's standard finish. Repair any damage to finish in a manner acceptable to the engineer.
- Mounting: Flush and surface required.

- Cardholder on inside of the door with clear plastic cover and complete type written schedule of panel branch circuits. Leave spare circuits blank.
- Nameplate: Required at each panel.
- Installation: As shown, maximum distance from the floor to the highest breaker (centerline) shall be 1.8m. Provided mounting materials required make connections specified as shown. Use collars around mounting bolts or equivalent means to provide air space between panels and walls.
- Warranty: A warranty for a period of one year shall be provided for failure of components resulting from normal use and/or factory defects.

G. SERVICE ENTRANCE

- Service Voltage: 230V, single phase, 2 wire, 60 Hz.
- Installation: Contractor shall furnish and install the complete service entrance, conduits and accessories.
- Conduits: Use RSC "NICHIP" or approved equal.

III. LIGHTING

A. GENERAL

- Furnish, install and wire all equipment and materials required for complete lighting system as specified as shown.

B. LIGHTING FIXTURES

- Fluorescent Fixture: housing - #22 gauge, B. I. Sheet formed, screw with machine stove bolt and/or welded.
- Fluorescent Fixture Ballast: 230V, high power factor, rapid start, manufactured by Philips, G. E. or approved equal.
- Wiring:

General: Fixture wiring shall comply with fixture manufacturer's recommendation and PEC requirements.

Incandescent Fixtures: Use type TF wire in unwired fixtures. Minimum wire size 3.5mm<sup>2</sup>.

- Location: Approximately as shown. Modify to avoid other equipment or structural components. Provide necessary conduits, wire, fittings and miscellaneous materials.

C. COORDINATION

- Coordination installation of all lighting fixtures with work of other trades
- Coordination exact location of fixtures with respect to suspended ceiling layout to achieve uniformity.



D. SHOP DRAWINGS AND SAMPLES

- Prepare and submit for approval before manufacturing the following:

Fabrication drawings  
Sample of each fixtures

E. WARRANTY

- All fixture components shall be covered with a warranty for a period of one year against failure resulting from normal use and/or factory defects.

F. GENERATOR

- General

The generator shall be \_\_\_\_\_ Kw standby duty, single phase, 2w, 60Hz, 1800 RPM, 240V, and shall have two bearings of the sleeve type and shall be direct connected to the engine flywheel with a flexible coupling. The generator shall have full armature winding. The transient voltage drop on sudden application of 100% rated load shall be less than 15%.

Voltage Regulator shall be of the same manufacturer as generator, with manual/automatic switch.

Generator shall be open drift-proof construction with an over all efficient of at least 90% of at full load.

The generator shall have full rated neutral brought out at the terminals for system use.

- Conduits and Fittings:

Conduits in general shall be Intermediate Metallic Conduit (IMC).

No Conduits shall be used in any system smaller than 15mm internal diameter electric trade size, nor shall have more than four (4) 90 degrees bends in any one run and where necessary, pull boxes shall be provided as directed.

No wire shall be pulled into any conduits until the conduit system is completed in all details, in the case of concealed work until all rough plastering machinery has been completed, and in the exposed work until the conduit work has completed in every detail.

- Wires and Cables

All wire shall be copper; soft drawn and annealed shall be of 98% conductivity, shall be smooth and true of cylindrical form and vibration shall be within 1% of the actual size.

All wires and cables shall comply with the requirements of UL as they apply to the particular usage.

All wires and cables shall be as manufactured by Phelps Dodge, American Wires and Cables, or approved equal.

THHN/THWN can be used for the same size of wires provided the allowable current do not exceed that of

All wires 8 mm<sup>2</sup> and larger shall be stranded copper.

For power system, no wire smaller than 3.5 mm<sup>2</sup> shall be used except for control leads unless otherwise specified.

- Installation

Installation shall conform to the requirement of the code.

Testing

The generator set shall receive the manufacturer's factory load testing prior to delivery.

Prior to acceptance of the installation, equipment shall be tested on site for 8 hrs. Continuous operation without any failure to show it is free of any defects will easily start and be subjected to full load test or that load that is available at the job site. Should failure occur during the testing, the Contractor shall rectify the deficiencies and shall repeat testing procedure at his own expense and to the satisfaction of the owner.

On completion, of the installation, a factory trained supplier or dealer's representative shall perform start-up based on operating instructions book.

## SPECIALTY WORKS

### A. STRUCTURAL STEEL WORKS

Scope:

- This section includes structural steel work complete.

General:

- Connection for which details are not indicated shall be deigned in accordance with the "American Institute of Steel Construction Manual of Sheet Construction" and shall be welded and bolted.

Requirements.

- Handling, shipping and storing of steel work.
- All materials shall be handled shipped and stored in a manner that will prevent distortion or other damage. Materials shall be stored in a clean location and keep properly drained. All damage materials shall be replaced or repaired by at the expense of the Contractor.

- Anchor bolts and sag rods shall conform to ASTM A 307 and applicable portions of A 36.
- Structural carbon steel for plates, angles, or shapes shall conform to ASTM specification A36.
- Cold-formed, light gauge structural member shall be formed from sheet or strip not less than 5mm thick and conforming to "Specifications for the Designed Light Gauge Cold-Form Steel Structural Members" of the American Iron and Steel Institute.
- Saddle shall be standard manufactured products of section shown and shall be heat treated, extruded aluminum alloy 6063-TS, conforming to ASTM Specification B221.
- Expansion shields shall be of the style, type and size suited for the intended use. Shields shall be accurately recessed and unless otherwise indicated shall be not less than 50mm into concrete or masonry.
- Bolts, nuts and washers shall be zinc-coated, regular commercial grade size as indicated and shall conform to ASTM specification A307.
- Power driven nails shall be steel, especially formulated to produce high ductility and hardness and capable of being explosively driven through the medium to be attached.
- Welding electrodes and rods for manual welding shall conform to AWS Specification A5.1 860.
- Expanded metal lath shall be as indicated and shall be of the close mesh, heavy duty and rigid type.
- Nails shall be common or finishing of the proper sizes for the intended use and shall be of the best commercial standard.
- Stainless steel and anchor clips, bolts and plates shall be of configuration and sizes shown and shall conform to the best commercial standard as approved.
- Workmanship and finish shall be equal to the best practice of modern shops for the respective work. Exposed surfaces shall have the smooth finish; sharp and well defined lines. Section shall be well framed to shape and size with the sharp lines and angles; curved work shall be sprung evenly to curves. All necessary rivets, lags and brackets shall be provided so that the work can be assembled in a neat and substantial manner. Holes for bolts and screws shall be drilled. Fastenings shall be concealed where practicable. Thickness of metal and details of assembly and supports shall provide ample strength and stiffness. Joints exposed to the weather shall be formed to exclude worker. Metal work shall be provided with proper clearances. Works shall be fabricated and installed in a manner that will provide for expansion and contraction, prevent the shearing of bolts, screws and other fastening, insure rigidity and provide close fitting of sections.



- Inserts and sleeves. Inserts of suitable and approved type shall be furnished and installed where necessary for the support of piping, mechanical equipment or apparatus, or other work. Steel pipe sleeves of suitable types and size shall be provided where indicated and where required for all pipe passing through floors, roofs or walls.
- Anchors and bolts shall be provided where indicated and where necessary for fastening work in place. They shall be embedded in the concrete and masonry as the work progresses and shall be spaced about 61cm on centers, unless otherwise indicated or specified. Sizes, kinds and spacing of anchors not indicated or specified shall be necessary for their purposes. All anchor and anchor bolts in exterior walls and in area exposed to weather shall be zinc coated, all those in other location shall be coated heavily bituminous paint.

#### Structure's subject to static loading.

- Holes fore bolts shall be drilled or sub-punched and reamed except that where the thickness of the material is not greater than the nominal diameter of the bolt plus 3mm, the holes may be punched full size.

#### Common bolts.

- Bolts transmitting shear shall be threaded to such a length that not more than one thread would be within the grip of the metal. The bolts shall be of such length that they will extend entirely through the nuts with the beveled end outside the nut. Bolt heads and nuts shall be drawn tight against the work with a suitable wrench not less than 38 cm long. Bolt heads shall be tapped with a hammer while the nut is being tightened.

#### Shop Painting

- All structural steel work, except zinc coated surfaces and steelwork to be embedded in concrete or mortar, shall be shop painted. Surfaces to be welded shall be not coated within 75mm of the weld, prior to welding. Surfaces shall thoroughly dry and clean when the paint is applied. No painting shall be done in wet weather except undercover; the temperature shall be above 45 degrees F but not over 90 degrees F. Paint shall be applied thoroughly. Surfaces that will be concealed or inaccessible after assembly shall be painted prior to assembly.

#### Cleaning

- Except as modified herein, surfaces shall be cleaned to bare metal by a suitable blasting process. Surfaces that maybe damaged by blasting shall be cleaned to bare metal by powered wire brushing or other mechanical means. Surface that will be enclosed from the weather and subject to exposure no more corrosive than an indoor atmosphere controlled for human comfort, maybe cleaned by wire brushing or other manual or mechanical means for removal of loose mill scale, rust, dirt and grease. Baring surfaces, including contact surfaces within friction type joints shall not be painted or galvanized but shall be coated with rust preventive coating applied, applied in the shop. The coating shall be removed just prior to field erection using a

remover approved by the rust preventive manufacturer. The surfaces when assembled shall be free from rust, greases, dirt and other foreign matter.

#### Pre-treatment

1. Except as modified herein, immediately after cleaning surfaces shall be coated with coat of pre-treatment coating applied to a dry film thickness of 0.3 to 0.5 mil or be given a crystalline phosphate base coating shall be applied only to blast-cleaned bare metal surfaces.

#### Match marking

- Members and component part of structures shall be assembled and match marked prior to erection to ensure accurate assembly and adjustment of position on final erection. Painted assembly markings shall be removed from any surface to be welded or riveted. Scratch or notch marks shall be located in a manner that will not affect the strength of member or cause concentrations of stress.

#### Erection

1. General. Except as modified herein, erection shall be done in accordance with the applicable specifications and standards of the AISC "Manual of Steel Construction". Erecting equipment shall be suitable for the work and shall be in first class condition. Where parts cannot be assembled or fitted properly as results of errors in fabrication or of deformation due to handling or transportation, such condition shall be reported immediately to the construction architect/engineer and his approval of the method correction obtained. The correction shall be made in his presence. Bent or damaged parts shall be rejected. Steelwork shall drain properly. Pockets in structure exposed to the weather shall be filled with waterproof materials. Safety belts and lines shall be used by workers on high structures, unless safe working platforms or safety nets are provided.

#### Assembly.

- The frame of steel structure shall be carried up true as shown and all match markings shall be followed. Temporary bracing shall be used wherever necessary to support all loads to which the structure maybe subjected, including equipment and operation thereof and piles of materials. Such bracing shall be left in a place as long as maybe required for safety. The various members forming parts of a completed frame after being assembled shall be aligned and adjusted accurately before being fastened. Fastening of splices of compression members shall be done after the abutting surfaces have been brought completely into contact. No riveting, welding or bolting shall be done until match of the structure has been stiffened and aligned properly. Bearing surfaces and surfaces, which will be in permanent contact, shall be cleaned before the members are assembled. As erection progress, the works shall be bolted or welded sufficiently to take care of all dead load, wind and erection stresses. Splices will be permitted only where indicated. Erection bolts used in welded construction maybe tightened securely and left in place, if removed, the holes shall be filled with plug welds.



#### Field Welding

Shall be as specified for shop fabrication of welded construction. Any shop paint on surfaces adjacent to joints to be field-welded shall be wire-brushed to reduce the paint film to a minimum.

#### Field Painting

All exposed surfaces of steelwork shall be shop painted. Surfaces where the shop coat of paint to be damaged shall be retouched using the same system as the original shop painting. Surfaces, which will be in contact after erection except when in contact with bolted and welded connections, shall be given one finish coat before erection. The cleaning, pre-treatment and priming of welds and the areas adjacent thereto shall be done promptly after the acceptance of the weld and shall be as specified under the shop painting.

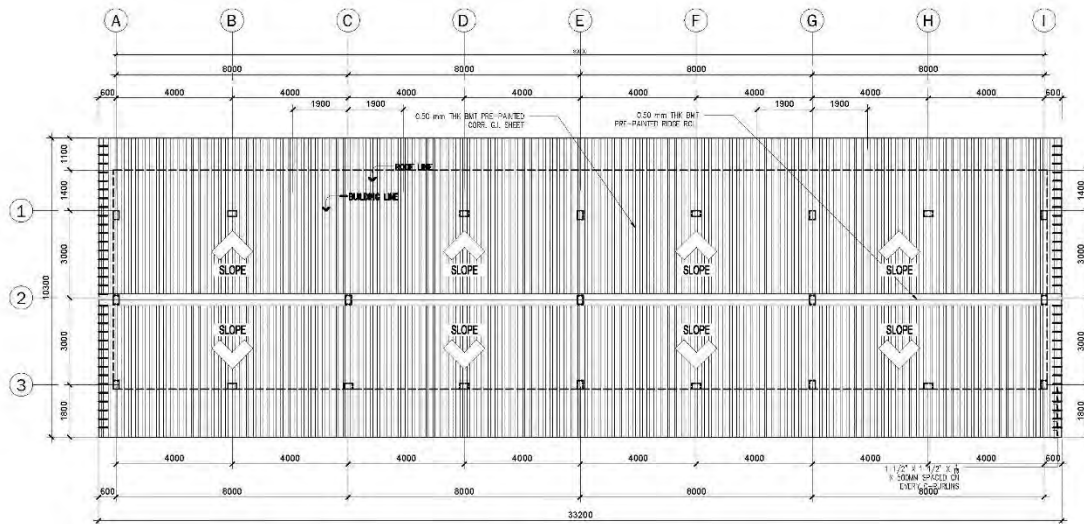
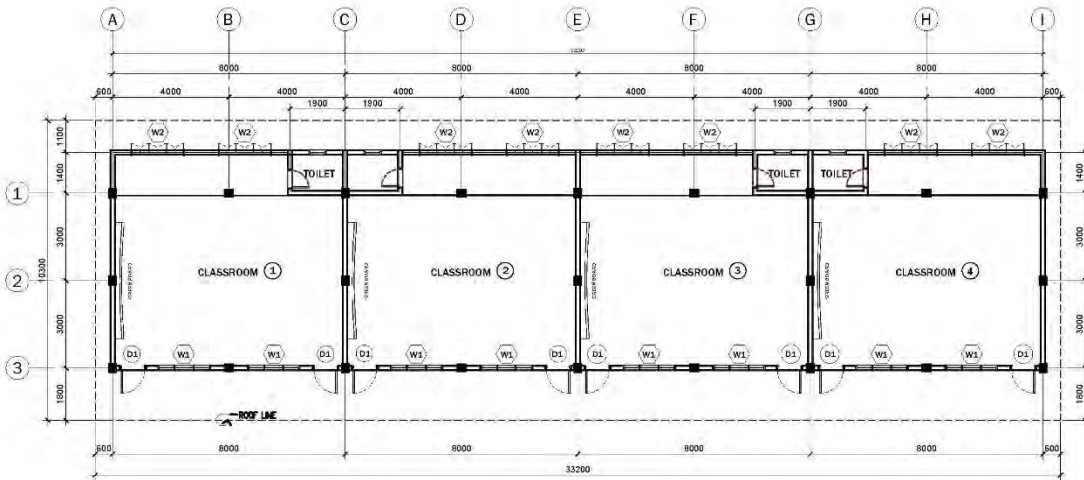
### B. FIRE ALARM SYSTEM

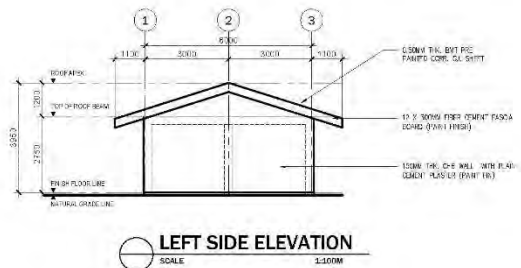
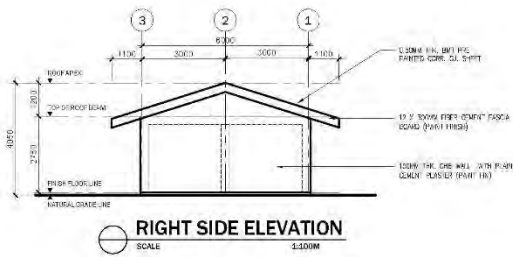
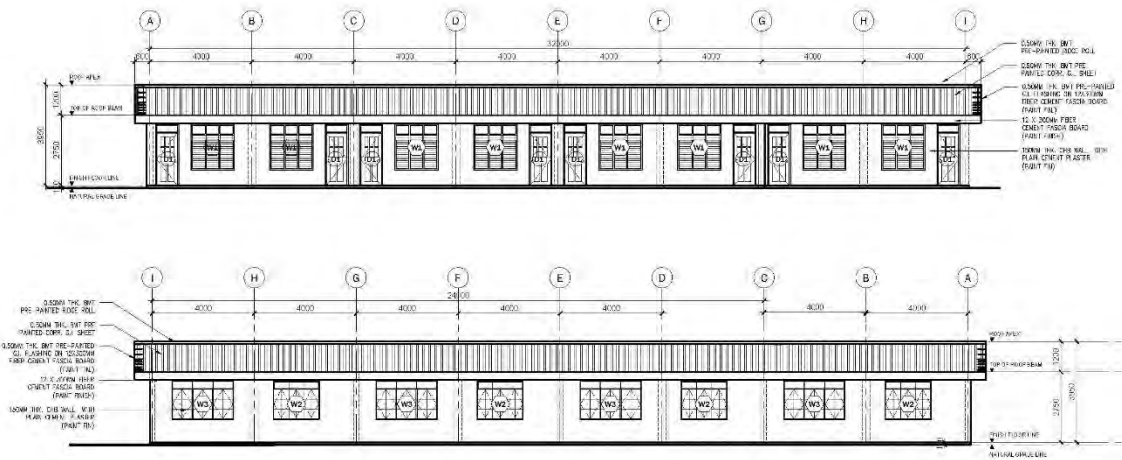
- Furnish and install a Fire Alarm system as manufactured by Edwards or approved equal as described in this specification and indicated in the drawings. The system is to be wired and installed in accordance and left in the first class operating conditions.
- Operation: At each stairway, exits and other locations shown in the plans, there shall be non-coded fire alarm station. At each location where shown, there shall be a bell or horn operating in any station and shall cause all sounding devices to operate continuously until the fire alarm station has been restored to normal. It shall also be possible for those in authority to transmit a test signal in any station. The station and sounding devices shall be connected to a control panel, which shall permit a small supervisory current to pass through the entire system. A trouble bell shall also be provided and shall sound continuously in the event of failure of the main power supply source or a ground fault at each installation wearing circuits.
- Equipment: Install where shown a flush non-coded manual fire alarm station. Flush station shall mount on standard outlet boxes with single gang cover.
- Install where shown on plans and under dome vibrating bell. Size and number of signals to be located so that they maybe heard by all occupants of the building.
- The Electrical Contractor shall provide and install smoke detectors, wiring and connection flow switches. The fire alarm panel shall be factory wired to accept this and any other devices specified herein or as shown on the drawings.
- Fire Extinguishers

Furnish and install eight (8) units of fire extinguishers, brand Stallion, 10 lbs. Per unit, mounted at 1.2 high at locations specified by the Consultant/Architect, four (4) units at the first floor and four (4) units at the second floor.

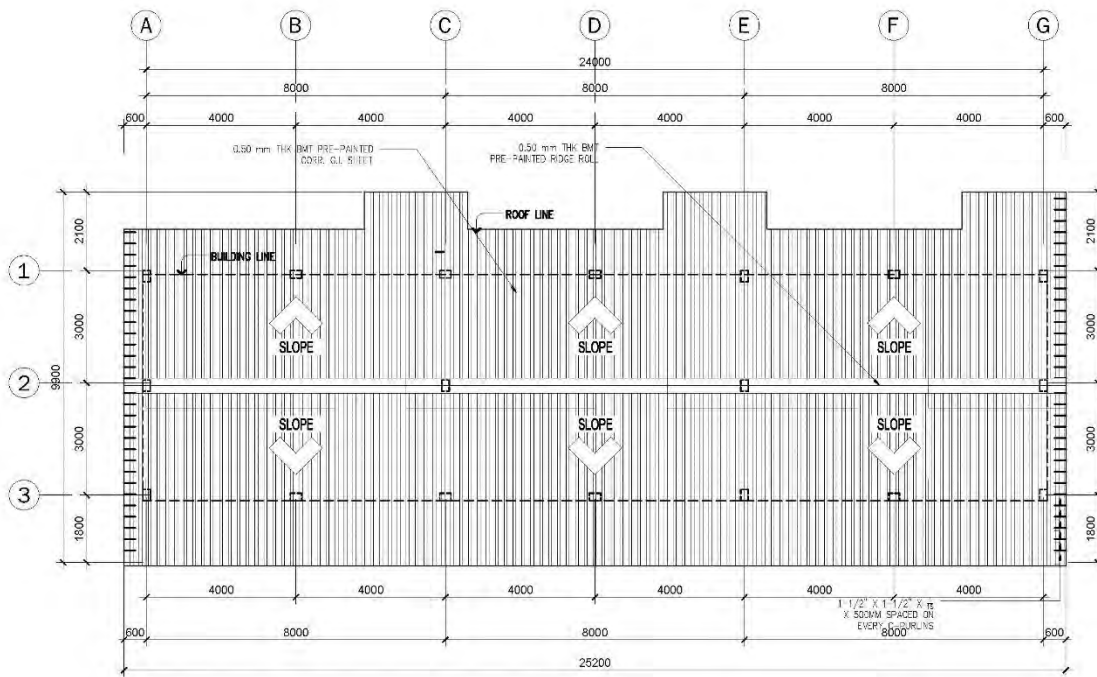
# Section VII. Drawings

## Bangunan ES

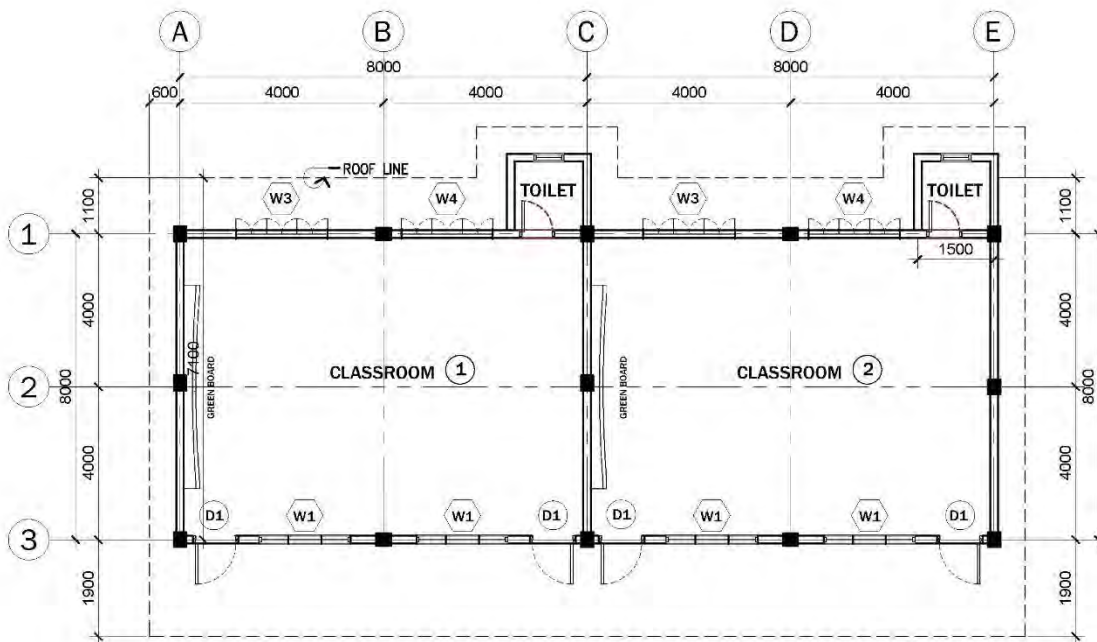


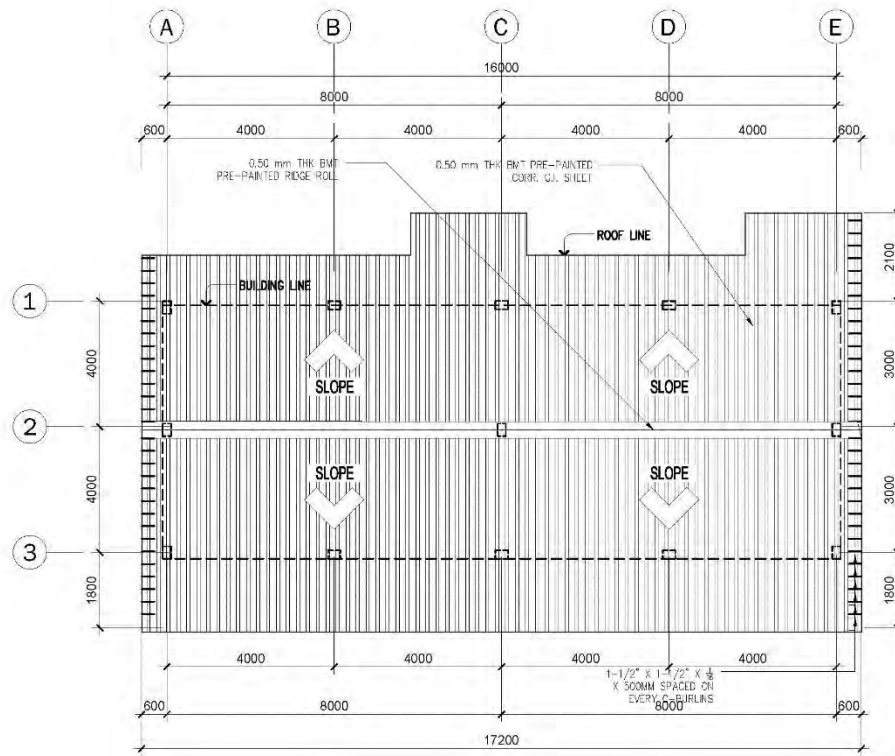






**Mabuslo ES**







# Section VIII. Bill of Quantities

(Letter Head)

## PROGRAM OF WORKS

### BILL OF QUANTITIES

BEFF 2024 - REGION 2 - NUEVA VIZCAYA - 001

|   |  |
|---|--|
| School : Baganan Elementary School  | Date: August, 2024   |
| School I.D : 103908   | Budget Allocation: 3,400,000.00  |
| Region : II   | Bid Amount:  |
| Division : NUEVA VIZCAYA  | Approved Budget for the Contract: 3,400,000.00   |
| Project Title :   | Completion Period:   |
| CY 2024 BASIC EDUCATION FACILITIES FUND (BEFF) REPAIR/REHABILITAION OF CLASSROOMS BATCH 1 | <b>Minimum Required Manpower:</b>  |
|   | Project Engineer      Electrical Engineer      General Foreman      Safety Officer         |
|   | Mason                      Painter                      Welder                      Helper |
|   | Carpenter  |
| Location : ARTAO, NUEVA VIZCAYA   | <b>Minimum Required Equipment:</b>   |
|   | Hand Tools                      Welding Machine      Service Vehicle      Backhoe          |
|   | One-Bagger Mixer              Bar Cutter              Dumptruck              Power Tools   |

| Item No. | Description   | % of Total | Unit   | Quantity | Direct Cost |           | Adjusted Unit Cost | Adjusted Total Cost |
|----------|---|------------|--------|----------|-------------|-----------|--------------------|---------------------|
|          |   |            |        |          | Total Cost  | Unit Cost |                    |                     |
| (1)      | (2)   | (3)        | (4)    | (5)      | (6)         | (7) / (5) | (8)                | (9)                 |
| A.       | <b>Facilities for the Engineer</b>                        |            |        |          |             |           |                    |                     |
| A.1      | Temporary Facilities                                      |            | Month  | 3.00     |             |           |                    |                     |
| B.       | <b>Other General Requirements</b>                         |            |        |          |             |           |                    |                     |
| B.1      | Fire Safety Inspection Certificate (FSIC)                 |            | lot    | 1.00     |             |           |                    |                     |
| SPL 1    | Project Billboard   |            | Each   | 1.00     |             |           |                    |                     |
| SPL 2    | Construction Safety and Health                            |            | Months | 3.00     |             |           |                    |                     |
| SPL 3    | Permits and Clearances                                    |            | Ls     | 1.00     |             |           |                    |                     |
| C.       | <b>Mobilization and Demobilization</b>                    |            |        |          |             |           |                    |                     |
| C.1      | Mobilization and Demobilization                           |            | Ls     | 1.00     |             |           |                    |                     |
| C.2      | Hauling   |            | Ls     | 1.00     |             |           |                    |                     |
|          | <b>BAGONG LIPUNAN SCHOOL BUILDING (JCL - 6.0m x 8.0m)</b> |            |        |          |             |           |                    |                     |
| D.1      | Removal of Structures and Obstruction                     |            | Ls     | 1.00     |             |           |                    |                     |

|             |   |  |       |          |  |  |  |  |
|-------------|---|--|-------|----------|--|--|--|--|
| <b>1.00</b> | <b>Earthworks</b>   |  |       |          |  |  |  |  |
| 1 (b)       | Structural Excavation   |  | cu. m | 3.00     |  |  |  |  |
| 1 (d)       | Gravel Bedding  |  | cu. m | 0.30     |  |  |  |  |
| <b>2.00</b> | <b>Concreting Works (3000 psi)</b>  |  |       |          |  |  |  |  |
| 2 (b)       | Structural Concrete (Footing)   |  | cu. m | 1.34     |  |  |  |  |
| <b>3.00</b> | <b>Rebar Works</b>  |  |       |          |  |  |  |  |
| 3 (a)       | Reinforcing Steel Bar, Grade 40   |  | kg    | 95.90    |  |  |  |  |
| 3 (b)       | Reinforcing Steel Bar, Grade 33   |  | kg    | 62.93    |  |  |  |  |
| <b>4.00</b> | <b>Formworks</b>  |  |       |          |  |  |  |  |
| 4 (a)       | Installation and Removal of Formworks   |  | sq. m | 7.20     |  |  |  |  |
| <b>5.00</b> | <b>Masonry Works</b>  |  |       |          |  |  |  |  |
| 5 (a)       | Demolition of Masonry Wall  |  | sq. m | 7.20     |  |  |  |  |
| 5 (b)       | Masonry (100 mm CHB)  |  | sq. m | 7.20     |  |  |  |  |
| 5 (c)       | Plain Cement Plaster Finish   |  | sq. m | 138.00   |  |  |  |  |
| 5 (e)       | Plain Cement floor Finish   |  | sq. m | 192.00   |  |  |  |  |
| <b>6.00</b> | <b>Fabricated Materials and Hardware</b>  |  |       |          |  |  |  |  |
| 6 (a)       | Removal of Door with Jamb   |  | sq. m | 8.40     |  |  |  |  |
| 6 (b)       | Removal of Window with Jamb   |  | sq. m | 25.20    |  |  |  |  |
| 6 (d)       | Wooden Panel Door   |  | sq. m | 16.80    |  |  |  |  |
| 6 (e)       | PVC Door  |  | Ls    | 1.00     |  |  |  |  |
| 6 (f)       | Jalousie Window (Glass)   |  | sq. m | 16.80    |  |  |  |  |
| 6 (g)       | Steel Casement Window (Swing Type)  |  | Ls    | 1.00     |  |  |  |  |
| 6 (h)       | Frames (Jambs, Sill, Head, Transoms, and Mullions)  |  | set   | 16.00    |  |  |  |  |
| 6 (i)       | Installation of Window Grilles  |  | set   | 8.00     |  |  |  |  |
| <b>7.00</b> | <b>Steel Works</b>  |  |       |          |  |  |  |  |
| 7 (c)       | Structural Steel Roof Truss   |  | kg    | 3,627.40 |  |  |  |  |
| 7 (d)       | Structural Steel Purlins  |  | kg    | 953.40   |  |  |  |  |
| 7 (e)       | Metal Structure Accessories (Steel Plates)  |  | kg    | 147.58   |  |  |  |  |
| 7 (f)       | Metal Structure Accessories (Anchor Bolts)  |  | pc    | 72.00    |  |  |  |  |
| 7 (g)       | Metal Structure Accessories (Sag Rods)  |  | pc    | 128.00   |  |  |  |  |
| 7 (h)       | Metal Structure Accessories (Turn Buckle)   |  | pc    | 32.00    |  |  |  |  |
| 7 (i)       | Metal Structure Accessories (Cross Bracing)   |  | pc    | 8.00     |  |  |  |  |
| <b>8.00</b> | <b>Roofing Works</b>  |  |       |          |  |  |  |  |
| 8 (a)       | Removal of Metal Roofing  |  | sq. m | 320.71   |  |  |  |  |
| 8 (b)       | G.I. Long-Span Roofing, Corrugated, Pre-Painted, 1220mm x 0.6mm thick   |  | sq. m | 327.35   |  |  |  |  |
| 8 (f)       | G.I. Ridge Roll, Pre-Painted, Ordinary, 0.610m x 2.440m x 0.5mm thick   |  | m     | 52.92    |  |  |  |  |
| <b>9.00</b> | <b>Ceiling and Carpentry Works</b>  |  |       |          |  |  |  |  |
| 9 (a)       | Removal of Wooden Truss/ Beams  |  | sq. m | 18.00    |  |  |  |  |
| 9 (b)       | Removal of Purlins  |  | sq. m | 320.71   |  |  |  |  |
| 9 (d)       | Removal of Ceiling  |  | sq. m | 305.44   |  |  |  |  |
| 9 (e)       | 4.5mm Fiber Cement Board/ 4.5mm Marine Plywood/ 6.0mm Marine Plywood/ 6.0 mm Ordinary Plywood in Wood Frame Ceiling |  | sq. m | 279.20   |  |  |  |  |
| 9 (e)       | Blackboard  |  | sq. m | 23.04    |  |  |  |  |

|              |  |                |        |  |  |  |                                |                     |
|--------------|--|----------------|--------|--|--|--|--------------------------------|---------------------|
| <b>10.00</b> | <b>Electrical Works</b>                |                |        |  |  |  |                                |                     |
| 10(a)1       | Removal of Existing Wires and Fixtures | Ls             | 1.00   |  |  |  |                                |                     |
| 10 (a)       | Conduit, Boxes and Fitting             | Ls             | 1.00   |  |  |  |                                |                     |
| 10 (b)       | Wires and Wiring Devices               | Ls             | 1.00   |  |  |  |                                |                     |
| 10 (c)       | Panel Board and Cabinets               | Ls             | 1.00   |  |  |  |                                |                     |
| 10 (d)       | Lighting Fixture and Fixture           | Ls             | 1.00   |  |  |  |                                |                     |
| <b>13.00</b> | <b>Painting Works</b>                  |                |        |  |  |  |                                |                     |
| 13 (a)1      | Removal of Existing Paints             | Ls             | 1.00   |  |  |  |                                |                     |
| 13 (a)       | Masonry Painting                       | sq.m           | 364.00 |  |  |  |                                |                     |
| 13 (b)       | Wooden Painting                        | sq.m           | 296.00 |  |  |  |                                |                     |
| 13 (c)       | Metal Painting                         | sq.m           | 23.04  |  |  |  |                                |                     |
| <b>14.00</b> | <b>Tile Works</b>                      |                |        |  |  |  |                                |                     |
| 14 (a)       | Glazed Tiles and Trims                 | sq.m           | 43.20  |  |  |  |                                |                     |
| 14 (B)       | Unglazed Tiles                         | sq.m           | 10.64  |  |  |  |                                |                     |
|              |  |                |        |  |  |  |                                |                     |
|              |  | <b>100.00%</b> |        |  |  |  | <b>Total Construction Cost</b> | <b>3,400,000.00</b> |

Prepared by:

(Signature Over Printed Name)  
Contractor

(Letterhead)

**PROGRAM OF WORKS**  
**BILL OF QUANTITIES**  
**BEFF 2024 - REGION 2 - NUEVA VIZCAYA - 001**

|   |  |
|---|--|
| School : Canabuan Elementary School   | Date:  |
| School I.D. : 103913  | Budget Allocation: 2,900,000.00  |
| Region : 02   | Engineering and Administrative Overhead:   |
| Division : NUEVA VIZCAYA  | Approved Budget for the Contract: 2,900,000.00                                     |
| Project Title :   | Completion Period: Calendar Days   |
| <b>CY 2024 BASIC EDUCATION FACILITIES FUND (BEFF) REPAIR/REHABILITATION OF CLASSROOMS BATCH 1</b> | <b>Minimum Required Manpower:</b>  |
|   | Project Engineer      Electrical Engineer      General Foreman      Safety Officer |
|   | Mason Carpenter      Painter      Welder      Helper                               |
| Location : Aritao, Nueva Vizcaya  | <b>Minimum Required Equipment:</b>   |
|   | Hand Tools      Welding Machine      Service Vehicle      Backhoe                  |
|   | One-Bagger Mixer      Bar Cutter      Dumptruck      Power Tools                   |

| Item No.  | Description                               | % of Total | Unit  | Quantity | Direct Cost       |                               | Adjusted Unit Cost<br>(8)<br>(3) / (5) | Adjusted Total Cost<br>(9) |
|-----------|---|------------|-------|----------|-------------------|-------------------------------|--|----------------------------|
|           |   |            |       |          | Total Cost<br>(6) | Unit Cost<br>(7)<br>(6) / (5) |  |                            |
| (1)       | (2)                                       | (3)        | (4)   | (5)      | (6)               | (7)                           | (8)                                    | (9)                        |
| <b>A.</b> | <b>Facilities for the Engineers</b>       |            |       |          |                   |                               |  |                            |
| A.1       | Temporary Facilities                      |            | Month | 3.00     | -                 | -                             | -                                      | -                          |
| <b>B.</b> | <b>Other General Requirements</b>         |            |       |          |                   |                               |  |                            |
| B.1       | Fire Safety Inspection Certificate (FSIC) |            | lot   | 1.00     | -                 | -                             | -                                      | -                          |
| SPL 1     | Project Billboard                         |            | Each  | 1.00     | -                 | -                             | -                                      | -                          |
| SPL 2     | Construction Safety and Health            |            | Month | 3.00     | -                 | -                             | -                                      | -                          |
| SPL 3     | Permits and Clearances                    |            | Ls    | 1.00     | -                 | -                             | -                                      | -                          |



| Item No.   | Description   | % of Total | Unit  | Quantity | Direct Cost |           | Adjusted Unit Cost | Adjusted Total Cost |
|------------|---|------------|-------|----------|-------------|-----------|--------------------|---------------------|
|            |   |            |       |          | Total Cost  | Unit Cost |                    |                     |
| <b>C.</b>  | <b>Mobilization and Demobilization</b>                    |            |       |          |             |           |                    |                     |
| C.1        | Mobilization and Demobilization                           |            | Ls    | 1.00     | -           | -         | -                  | -                   |
| C.2        | Hauling   |            | Ls    | 1.00     | -           | -         | -                  | -                   |
| <b>D.</b>  | <b>BAGONG LIPUNAN SCHOOL BUILDING (3CL - 6.2m x 8.0m)</b> |            |       |          |             |           |                    |                     |
| D.1        | Removal of Obstructions                                   |            | Ls    | 1.00     | -           | -         | -                  | -                   |
| <b>1.0</b> | <b>Earthworks</b>   |            |       |          |             |           |                    |                     |
| 1 (b)      | Structural Excavation                                     |            | cu.m. | 42.56    | -           | -         | -                  | -                   |
| 1 (c)      | Backfilling of Excavated Materials                        |            | cu.m. | 31.69    | -           | -         | -                  | -                   |
| 1 (d)      | Gravel Bedding  |            | cu.m. | 3.91     | -           | -         | -                  | -                   |
| <b>2.0</b> | <b>Concreting Works</b>                                   |            |       |          |             |           |                    |                     |
| 2 (b)      | Structural Concrete (Footing)                             |            | cu.m. | 9.78     | -           | -         | -                  | -                   |
| 2 (c)      | Structural Concrete (Column and Girder/ Beam)             |            | cu.m. | 11.09    | -           | -         | -                  | -                   |
| <b>3.0</b> | <b>Rebar Works</b>  |            |       |          |             |           |                    |                     |
| 3 (a)      | Reinforcing Steel Bar, Grade 40                           |            | kg    | 1,297.12 | -           | -         | -                  | -                   |
| 3 (b)      | Reinforcing Steel Bar, Grade 33                           |            | kg    | 1,010.65 | -           | -         | -                  | -                   |
| <b>4.0</b> | <b>Formworks</b>  |            |       |          |             |           |                    |                     |
| 4 (a)      | Installation and Removal of Formworks                     |            | sq.m. | 187.44   | -           | -         | -                  | -                   |
| <b>5.0</b> | <b>Masonry Works</b>                                      |            |       |          |             |           |                    |                     |
| 5 (a)      | Demolition of Masonry Wall                                |            | sq.m. | 121.33   | -           | -         | -                  | -                   |
| 5 (c)      | Masonry (150 mm CHB)                                      |            | sq.m. | 186.00   | -           | -         | -                  | -                   |
| 5 (d)      | Plain Cement Plaster Finish                               |            | sq.m. | 372.00   | -           | -         | -                  | -                   |
| 5 (e)      | Plain Cement Floor Finish                                 |            | sq.m. | 196.80   | -           | -         | -                  | -                   |
| <b>6.0</b> | <b>Fabricated Materials and Hardware</b>                  |            |       |          |             |           |                    |                     |
| 6 (a)      | Removal of Door with Jamb                                 |            | set   | 3.00     | -           | -         | -                  | -                   |
| 6 (b)      | Removal of Window with Jamb                               |            | sq.m. | 46.17    | -           | -         | -                  | -                   |
| 6 (c)      | PVC Door  |            | Ls    | 1.00     | -           | -         | -                  | -                   |
| 6 (d)      | Wooden Panel Door   |            | sq.m. | 12.96    | -           | -         | -                  | -                   |
| 6 (e)      | Jalousie Window (Glass)                                   |            | sq.m. | 18.36    | -           | -         | -                  | -                   |
| 6 (f)      | Swing Type Steel Casement Window                          |            | Ls    | 1.00     | -           | -         | -                  | -                   |
| 6 (g)      | Awning Window   |            | Ls    | 1.00     | -           | -         | -                  | -                   |
| 6 (h)      | Frames (Jambs, Sill, Head, Transoms, and Mullions)        |            | Ls    | 1.00     | -           | -         | -                  | -                   |
| 6 (i)      | Installation of Security Grilles                          |            | Ls    | 1.00     | -           | -         | -                  | -                   |
| <b>7.0</b> | <b>Steel Works</b>  |            |       |          |             |           |                    |                     |
| 7 (c)      | Structural Steel Roof Truss                               |            | kg    | 2,062.83 | -           | -         | -                  | -                   |
| 7 (d)      | Structural Steel Purlins                                  |            | kg    | 1,110.24 | -           | -         | -                  | -                   |

| Item No.    | Description   | % of Total | Unit  | Quantity | Direct Cost |           | Adjusted Unit Cost             | Adjusted Total Cost |
|-------------|---|------------|-------|----------|-------------|-----------|--------------------------------|---------------------|
|             |   |            |       |          | Total Cost  | Unit Cost |                                |                     |
| 7 (e)       | Metal Structure Accessories (Steel Plates)  |            | kg    | 102.05   | -           | -         | -                              | -                   |
| 7 (f)       | Metal Structure Accessories (Anchor Bolts)  |            | pc    | 56.00    | -           | -         | -                              | -                   |
| 7 (g)       | Metal Structure Accessories (Sag Rods)  |            | pc    | 80.00    | -           | -         | -                              | -                   |
| 7 (h)       | Metal Structure Accessories (Turn Buckle)   |            | pc    | 24.00    | -           | -         | -                              | -                   |
| 7 (i)       | Metal Structure Accessories (Cross Bracing)   |            | pc    | 24.00    | -           | -         | -                              | -                   |
| <b>8.0</b>  | <b>Roofing Works</b>  |            |       |          |             |           |                                |                     |
| 8 (a)       | Removal of Metal Roofing  |            | sq.m. | 242.93   | -           | -         | -                              | -                   |
| 8 (b)       | Pre - painted Metal Sheets (Corrugated, Long Span, above 0 427 BMT)   |            | sq.m. | 242.93   | -           | -         | -                              | -                   |
| 8 (e)       | Fabricated Metal Roofing Accessory (Ridge Roll and Flashing)  |            | m     | 25.20    | -           | -         | -                              | -                   |
| <b>9.0</b>  | <b>Ceiling and Carpentry Works</b>  |            |       |          |             |           |                                |                     |
| 9 (a)       | Removal of Wooden Truss / Beams   |            | Ls    | 1.00     | -           | -         | -                              | -                   |
| 9 (b)       | Removal of Wooden Purlins   |            | Ls    | 1.00     | -           | -         | -                              | -                   |
| 9 (c)       | Removal of Partition  |            | sq.m. | 32.24    | -           | -         | -                              | -                   |
| 9 (d)       | Removal of Ceiling  |            | sq.m. | 231.84   | -           | -         | -                              | -                   |
| 9 (e)       | 4.5mm Fiber Cement Board/ 4.5mm Marine Plywood/ 6.0mm Marine Plywood/ 6.0 mm Ordinary Plywood in Wood Frame Ceiling |            | sq.m. | 231.84   | -           | -         | -                              | -                   |
| 9 (i)       | Blackboard  |            | sq.m. | 17.28    | -           | -         | -                              | -                   |
| <b>10.0</b> | <b>Electrical Works</b>   |            |       |          |             |           |                                |                     |
| 10 (a)      | Removal of Existing Wires and Fixtures  |            | Ls    | 1.00     | -           | -         | -                              | -                   |
| 10 (b)      | Conduit, Boxes and Fitting  |            | Ls    | 1.00     | -           | -         | -                              | -                   |
| 10 (c)      | Wires and Wiring Devices  |            | Ls    | 1.00     | -           | -         | -                              | -                   |
| 10 (d)      | Lighting Fixtures/ Fixtures   |            | Ls    | 1.00     | -           | -         | -                              | -                   |
| 10 (e)      | Panel Board and Cabinets  |            | Ls    | 1.00     | -           | -         | -                              | -                   |
| <b>13.0</b> | <b>Painting Works</b>   |            |       |          |             |           |                                |                     |
| 13 (a)      | Masonry Painting  |            | sq.m. | 372.00   | -           | -         | -                              | -                   |
| 13 (b)      | Wooden Painting   |            | sq.m. | 249.12   | -           | -         | -                              | -                   |
| 13 (c)      | Metal Painting  |            | Ls    | 1.00     | -           | -         | -                              | -                   |
|             |   |            |       |          |             |           |                                |                     |
|             |   |            |       |          |             |           | <b>Total Construction Cost</b> | -                   |

Prepared by:

(Signature over Printed Name)

Contractor

(Letter Head)

**PROGRAM OF WORKS**  
**BILL OF QUANTITIES**

BEFF 2024 - REGION 2 - NUEVA VIZCAYA - 003

|               |   |                                   |                     |
|---------------|---|-----------------------------------|---------------------|
| School        | : Mabusto Elementary School   | Date:                             | August, 2024        |
| School I.D    | : 103974  | Budget Allocation:                | 3,400,000.00        |
| Region        | : II  | Bid Amount:                       |                     |
| Division      | : NUEVA VIZCAYA   | Approved Budget for the Contract: | 3,400,000.00        |
| Project Title | : CY 2024 BASIC EDUCATION FACILITIES FUND (BEFF) REPAIR/REHABILITAION OF CLASSROOMS BATCH 1 | Completion Period:                |                     |
|               |   | Minimum Required Manpower:        |                     |
|               |   | Project Engineer                  | Electrical Engineer |
|               |   | Mason                             | Painter             |
|               |   |                                   | Welder              |
|               |   |                                   | Helper              |
|               |   | Carpenter                         |                     |
|               |   | Minimum Required Equipment:       |                     |
|               |   | Hand Tools                        | Welding Machine     |
|               |   | One-Bagger Mixer                  | Bar Cutter          |
|               |   |                                   | Service Vehicle     |
|               |   |                                   | Backhoe             |
|               |   |                                   | Dumptruck           |
|               |   |                                   | Power Tools         |
| Location      | : BAMBANG, NUEVA VIZCAYA  |                                   |                     |

| Item No.    | Description   | % of Total | Unit   | Quantity | Direct Cost |           | Adjusted Unit Cost | Adjusted Total Cost |
|-------------|---|------------|--------|----------|-------------|-----------|--------------------|---------------------|
|             |   |            |        |          | Total Cost  | Unit Cost |                    |                     |
| (1)         | (2)   | (3)        | (4)    | (5)      | (6)         | (7) / (5) | (8) / (5)          | (9)                 |
| <b>A.</b>   | <b>Facilities for the Engineer</b>                        |            |        |          |             |           |                    |                     |
| A.1         | Temporary Facilities                                      |            | Month  | 3.00     |             |           |                    |                     |
| <b>B.</b>   | <b>Other General Requirements</b>                         |            |        |          |             |           |                    |                     |
| B.1         | Fire Safety Inspection Certificate (FSIC)                 |            | lot    | 1.00     |             |           |                    |                     |
| SPL 1       | Project Billboard   |            | Each   | 1.00     |             |           |                    |                     |
| SPL 2       | Construction Safety and Health                            |            | Months | 3.00     |             |           |                    |                     |
| SPL 3       | Permits and Clearances                                    |            | Ls     | 1.00     |             |           |                    |                     |
| <b>C.</b>   | <b>Mobilization and Demobilization</b>                    |            |        |          |             |           |                    |                     |
| C.1         | Mobilization and Demobilization                           |            | Ls     | 1.00     |             |           |                    |                     |
| C.2         | Hauling   |            | Ls     | 1.00     |             |           |                    |                     |
|             | <b>BAGONG LIPUNAN SCHOOL BUILDING (2CL - 8.0m x 8.0m)</b> |            |        |          |             |           |                    |                     |
| D.1         | Removal of Structures and Obstruction                     |            | Ls     | 1.00     |             |           |                    |                     |
| <b>1.00</b> | <b>Earthworks</b>   |            |        |          |             |           |                    |                     |
| 1 (b)       | Structural Excavation                                     |            | cu.m   | 4.23     |             |           |                    |                     |
| 1 (d)       | Gravel Bedding  |            | cu.m   | 0.57     |             |           |                    |                     |
| <b>2.00</b> | <b>Concreting Works (3000 psi)</b>                        |            |        |          |             |           |                    |                     |

|              |   |  |      |          |  |  |  |  |
|--------------|---|--|------|----------|--|--|--|--|
| 2 (b)        | Structural Concrete (Footing)   |  | cu.m | 4.21     |  |  |  |  |
| 2 (c)        | Structural Concrete (Column)  |  | cu.m | 0.42     |  |  |  |  |
| <b>3.00</b>  | <b>Rebar Works</b>  |  |      |          |  |  |  |  |
| 3 (a)        | Reinforcing Steel Bar, Grade 40   |  | kg   | 91.04    |  |  |  |  |
| 3 (b)        | Reinforcing Steel Bar, Grade 33   |  | kg   | 59.23    |  |  |  |  |
| <b>4.00</b>  | <b>Formworks</b>  |  |      |          |  |  |  |  |
| 4 (a)        | Installation and Removal of Formworks   |  | sq.m | 6.30     |  |  |  |  |
| <b>5.00</b>  | <b>Masonry Works</b>  |  |      |          |  |  |  |  |
| 5 (a)        | Removal of Wooden Partition Wall  |  | sq.m | 29.76    |  |  |  |  |
| 5 (b)        | Masonry (100 mm CHB)  |  | sq.m | 37.20    |  |  |  |  |
| 5 (c)        | Plain Cement Plaster Finish   |  | sq.m | 102.43   |  |  |  |  |
| <b>6.00</b>  | <b>Fabricated Materials and Hardware</b>  |  |      |          |  |  |  |  |
| 6 (a)        | Removal of Door with Jamb   |  | sq.m | 6.72     |  |  |  |  |
| 6 (b)        | Removal of Window with Jamb   |  | sq.m | 46.90    |  |  |  |  |
| 6 (d)        | Wooden Panel Door   |  | sq.m | 8.40     |  |  |  |  |
| 6 (e)        | PVC Door  |  | Ls   | 1.00     |  |  |  |  |
| 6 (f)        | Jalousie Window (Glass)   |  | sq.m | 8.50     |  |  |  |  |
| 6 (g)        | Steel Casement Window (Swing Type)  |  | Ls   | 1.00     |  |  |  |  |
| 6 (h)        | Frames (Jambs, Sill, Head, Transoms, and Mullions)  |  | set  | 8.00     |  |  |  |  |
| 6 (i)        | Installation of Window Grilles  |  | set  | 4.00     |  |  |  |  |
| <b>7.00</b>  | <b>Steel Works</b>  |  |      |          |  |  |  |  |
| 7 (c)        | Structural Steel Roof Truss   |  | kg   | 1,077.57 |  |  |  |  |
| 7 (d)        | Structural Steel Purlins  |  | kg   | 667.36   |  |  |  |  |
| 7 (e)        | Metal Structure Accessories (Steel Plates)  |  | kg   | 82.03    |  |  |  |  |
| 7 (f)        | Metal Structure Accessories (Anchor Bolts)  |  | pc   | 40.00    |  |  |  |  |
| 7 (g)        | Metal Structure Accessories (Sag Rods)  |  | pc   | 68.00    |  |  |  |  |
| 7 (h)        | Metal Structure Accessories (Turn Buckle)   |  | pc   | 32.00    |  |  |  |  |
| 7 (i)        | Metal Structure Accessories (Cross Bracing)   |  | pc   | 16.00    |  |  |  |  |
| <b>8.00</b>  | <b>Roofing Works</b>  |  |      |          |  |  |  |  |
| 8 (a)        | Removal of Metal Roofing  |  | sq.m | 164.30   |  |  |  |  |
| 8 (b)        | G 1 Long-Span Roofing, Corrugated, Pre-Painted, 1220mm x 0.6mm thick  |  | sq.m | 172.30   |  |  |  |  |
| 8 (f)        | G 1 Ridge Roll, Pre-Painted, Ordinary, 0.610m x 2.440m x 0.5mm thick  |  | m    | 27.56    |  |  |  |  |
| <b>9.00</b>  | <b>Ceiling and Carpentry Works</b>  |  |      |          |  |  |  |  |
| 9 (a)        | Removal of Wooden Truss/ Beams  |  | sq.m | 14.88    |  |  |  |  |
| 9 (b)        | Removal of Purlins  |  | sq.m | 5.88     |  |  |  |  |
| 9 (d)        | Removal of Ceiling  |  | sq.m | 157.83   |  |  |  |  |
| 9 (e)        | 4.5mm Fiber Cement Board/ 4.5mm Marine Plywood/ 6.0mm Marine Plywood/ 6.0 mm Ordinary Plywood in Wood Frame Ceiling |  | sq.m | 157.83   |  |  |  |  |
| 9 (e)        | Blackboard  |  | sq.m | 11.52    |  |  |  |  |
| <b>10.00</b> | <b>Electrical Works</b>   |  |      |          |  |  |  |  |
| 10 (a) 1     | Removal of Existing Wires and Fixtures  |  | Ls   | 1.00     |  |  |  |  |
| 10 (a)       | Conduit, Boxes and Fitting  |  | Ls   | 1.00     |  |  |  |  |
| 10 (b)       | Wires and Wiring Devices  |  | Ls   | 1.00     |  |  |  |  |
| 10 (c)       | Lighting Fixture and Fixture  |  | Ls   | 1.00     |  |  |  |  |
| 10 (c)       | Panel Board and Cabinets  |  | Ls   | 1.00     |  |  |  |  |
| <b>13.00</b> | <b>Painting Works</b>   |  |      |          |  |  |  |  |
| 13 (a)       | Masonry Painting  |  | sq.m | 182.34   |  |  |  |  |



|  |   |  |      |        |  |  |  |
|--|---|--|------|--------|--|--|--|
| 13 (b)                                   | Wooden Painting   |  | sq.m | 165.69 |  |  |  |
| 13 (c)                                   | Blackboard  |  | sq.m | 11.52  |  |  |  |
| 13 (d)                                   | Metal Painting  |  | sq.m | 119.56 |  |  |  |
| <b>SEMP BUILDING (2CL - 8.0m x 7.0m)</b> |   |  |      |        |  |  |  |
| D.1                                      | Removal of Structures and Obstruction                                 |  | Ls   | 1.00   |  |  |  |
| <b>1.00</b>                              | <b>Earthworks</b>   |  |      |        |  |  |  |
| 1 (b)                                    | Structural Excavation   |  | cu.m | 1.34   |  |  |  |
| 1 (d)                                    | Gravel Bedding  |  | cu.m | 0.22   |  |  |  |
| <b>2.00</b>                              | <b>Concreting Works (3000 psi)</b>                                    |  |      |        |  |  |  |
| 2 (b)                                    | Structural Concrete (Footing and Slab on Fill)                        |  | cu.m | 5.36   |  |  |  |
| <b>3.00</b>                              | <b>Rebar Works</b>  |  |      |        |  |  |  |
| 3 (a)                                    | Reinforcing Steel Bar, Grade 33                                       |  | kg   | 140.68 |  |  |  |
| <b>5.00</b>                              | <b>Masonry Works</b>  |  |      |        |  |  |  |
| 5 (a)                                    | Demolition of Masonry Wall  |  | sq.m | 19.54  |  |  |  |
| 5 (b)                                    | Masonry (100 mm CHB)  |  | sq.m | 16.72  |  |  |  |
| 5 (c)                                    | Plain Cement Plaster Finish   |  | sq.m | 33.44  |  |  |  |
| <b>6.00</b>                              | <b>Fabricated Materials and Hardware</b>                              |  |      |        |  |  |  |
| 6 (a)                                    | Removal of Door with Jamb   |  | sq.m | 4.20   |  |  |  |
| 6 (b)                                    | Removal of Window with Jamb   |  | sq.m | 8.64   |  |  |  |
| 6 (d)                                    | Wooden Panel Door   |  | sq.m | 8.40   |  |  |  |
| 6 (e)                                    | PVC Door  |  | Ls   | 1.00   |  |  |  |
| 6 (f)                                    | Jalousie Window (Glass)   |  | sq.m | 8.50   |  |  |  |
| 6 (g)                                    | Steel Casement Window (Awning Type)                                   |  | Ls   | 1.00   |  |  |  |
| 6 (h)                                    | Frames (Jamb, Sill, Head, Transoms, and Mullions)                     |  | set  | 10.00  |  |  |  |
| 6 (i)                                    | Installation of Window Grilles  |  | set  | 4.00   |  |  |  |
| <b>7.00</b>                              | <b>Steel Works</b>  |  |      |        |  |  |  |
| 7 (c)                                    | Structural Steel Roof Truss   |  | kg   | 754.90 |  |  |  |
| 7 (d)                                    | Structural Steel Purlins  |  | kg   | 526.52 |  |  |  |
| 7 (e)                                    | Metal Structure Accessories (Steel Plates)                            |  | kg   | 66.74  |  |  |  |
| 7 (f)                                    | Metal Structure Accessories (Anchor Bolts)                            |  | pc   | 20.00  |  |  |  |
| 7 (g)                                    | Metal Structure Accessories (Sag Rods)                                |  | pc   | 68.00  |  |  |  |
| 7 (h)                                    | Metal Structure Accessories (Turn Buckle)                             |  | pc   | 32.00  |  |  |  |
| 7 (i)                                    | Metal Structure Accessories (Cross Bracing)                           |  | pc   | 16.00  |  |  |  |
| <b>8.00</b>                              | <b>Roofing Works</b>  |  |      |        |  |  |  |
| 8 (a)                                    | Removal of Metal Roofing  |  | sq.m | 169.31 |  |  |  |
| 8 (b)                                    | G.I. Long-Span Roofing, Corrugated, Pre-Painted, 1220mm x 0.6mm thick |  | sq.m | 160.23 |  |  |  |
| 8 (f)                                    | G.I. Ridge Roll, Pre-Painted, Ordinary, 0.610m x 2.440m x 0.5mm thick |  | m    | 46.86  |  |  |  |
| <b>9.00</b>                              | <b>Ceiling and Carpentry Works</b>                                    |  |      |        |  |  |  |
| 9 (a)                                    | Removal of Wooden Truss/ Beams  |  | sq.m | 26.25  |  |  |  |
| 9 (b)                                    | Removal of Purlins  |  | sq.m | 5.28   |  |  |  |
| 9 (d)                                    | Removal of Ceiling  |  | sq.m | 161.60 |  |  |  |
| 9 (e)                                    | 4.5mm Fiber Cement Board/ 4.5mm Marine Plywood/ 6.0mm Marine Plywood/ |  | sq.m | 165.60 |  |  |  |
| 9 (e)                                    | Blackboard  |  | sq.m | 11.52  |  |  |  |
| <b>10.00</b>                             | <b>Electrical Works</b>   |  |      |        |  |  |  |
| 10(a)1                                   | Removal of Existing Wires and Fixtures                                |  | Ls   | 1.00   |  |  |  |
| 10 (a)                                   | Conduit, Boxes and Fitting  |  | Ls   | 1.00   |  |  |  |
| 10 (b)                                   | Wires and Wiring Devices  |  | Ls   | 1.00   |  |  |  |

|              |                              |         |      |        |  |                                |  |
|--------------|------------------------------|---------|------|--------|--|--------------------------------|--|
| 10 (c)       | Lighting Fixture and Fixture |         | Ls   | 1.00   |  |                                |  |
| 10 (d)       | Panel Board and Cabinets     |         | Ls   | 1.00   |  |                                |  |
| <b>13.00</b> | <b>Painting Works</b>        |         |      |        |  |                                |  |
| 13 (a)       | Masonry Painting             |         | sq.m | 236.96 |  |                                |  |
| 13 (b)       | Wooden Painting              |         | sq.m | 165.60 |  |                                |  |
| 13 (c)       | Blackboard                   |         | sq.m | 11.52  |  |                                |  |
| 13 (d)       | Metal Painting               |         | sq.m | 120.06 |  |                                |  |
|              |                              | 100.00% |      |        |  | <b>Total Construction Cost</b> |  |

Prepared by:

(Signature Over Printed Name)  
Contractor

***Section IX. Checklist of Technical and Financial Documents***

# Checklist of Technical and Financial Documents

## I. TECHNICAL COMPONENT ENVELOPE

### *Class "A" Documents*

#### Legal Documents

- (a) Valid PhilGEPS Registration Certificate (Platinum Membership) (all pages);  
**or**
- (b) Registration certificate from Securities and Exchange Commission (SEC),

Department of Trade and Industry (DTI) for sole proprietorship, or Cooperative Development Authority (CDA) for cooperatives or its equivalent document;

**and**

- (c) Mayor's or Business permit issued by the city or municipality where the principal place of business of the prospective bidder is located, or the equivalent document for Exclusive Economic Zones or Areas;  
**and**
- (d) Tax clearance per E.O. No. 398, s. 2005, as finally reviewed and approved by the Bureau of Internal Revenue (BIR).

#### Technical Documents

- (e) Statement of the prospective bidder of all its ongoing government and private contracts, including contracts awarded but not yet started, if any, whether similar or not similar in nature and complexity to the contract to be bid; **and**
- (f) Statement of the bidder's Single Largest Completed Contract (SLCC) similar to the contract to be bid, except under conditions provided under the rules;  
**and**
- (g) Philippine Contractors Accreditation Board (PCAB) License;  
**or**  
Special PCAB License in case of Joint Ventures;  
**and** registration for the type and cost of the contract to be bid; **and**
- (h) Original copy of Bid Security. If in the form of a Surety Bond, submit also a certification issued by the Insurance Commission;  
**or**  
Original copy of Notarized Bid Securing Declaration; **and**
- (i) Project Requirements, which shall include the following:
  - a. Organizational chart for the contract to be bid;
  - b. List of contractor's key personnel (*e.g.*, Project Manager, Project Engineers, Materials Engineers, and Foremen), to be assigned to the contract to be bid, with their complete qualification and experience data;
  - c. List of contractor's major equipment units, which are owned, leased, and/or under purchase agreements, supported by proof of ownership or lessor/vendor for the duration of the project, as the case may be; **and**
- (j) Original duly signed Omnibus Sworn Statement (OSS);

**and** if applicable, Original Notarized Secretary's Certificate in case of a corporation, partnership, or cooperative; or Original Special Power of Attorney of all members of the joint venture giving full power and authority to its officer to sign the OSS and do acts to represent the Bidder.

Financial Documents

- (k) The prospective bidder's audited financial statements, showing, among others, the prospective bidder's total and current assets and liabilities, stamped "received" by the BIR or its duly accredited and authorized institutions, for the preceding calendar year which should not be earlier than two (2) years from the date of bid submission; **and**
- (l) The prospective bidder's computation of Net Financial Contracting Capacity (NFCC).

**Class "B" Documents**

- (m) If applicable, duly signed joint venture agreement (JVA) in accordance with RA No. 4566 and its IRR in case the joint venture is already in existence;  
**or**  
duly notarized statements from all the potential joint venture partners stating that they will enter into and abide by the provisions of the JVA in the instance that the bid is successful.

**II. FINANCIAL COMPONENT ENVELOPE**

- (n) Original of duly signed and accomplished Financial Bid Form; **and**

Other documentary requirements under RA No. 9184

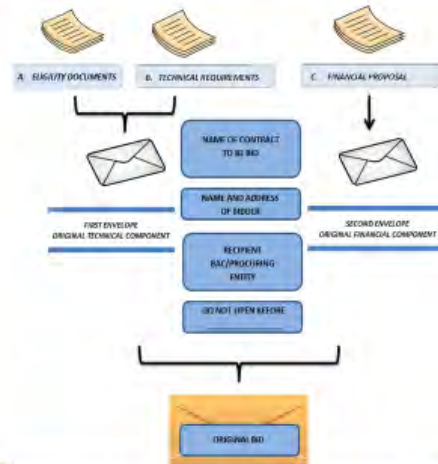
- (o) Original of duly signed Bid Prices in the **Bill of Quantities**; **and**
- (p) Duly accomplished **Detailed Unit Price Analysis**, including a **Summary Sheet**  
indicating the unit prices of construction materials, labor rates, and equipment
- (q) **Cash Flow** by Quarter.

# SEALING AND MARKING OF BIDS

# 1

Enclose the ORIGINAL eligibility and technical documents in one sealed envelope marked **“ORIGINAL – TECHNICAL COMPONENT”** and the ORIGINAL financial component in another sealed envelope marked **“ORIGINAL – FINANCIAL COMPONENT”**

*(Apply the same for copies, if PE requested, but marking should be “Copy # - Technical/Financial Component”)*



This learning module was developed by the Government Procurement Policy Board – Technical Support Office, and any form of reproduction and distribution without the author's approval is prohibited.

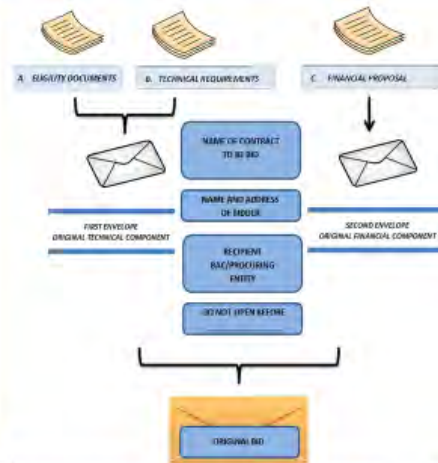


# SEALING AND MARKING OF BIDS

# 2

Seal both envelopes in an outer envelope marked **“ORIGINAL BID”**

*(Apply the same for copies, if PE requested, but marking should be “Copy # of Original Bid”)*



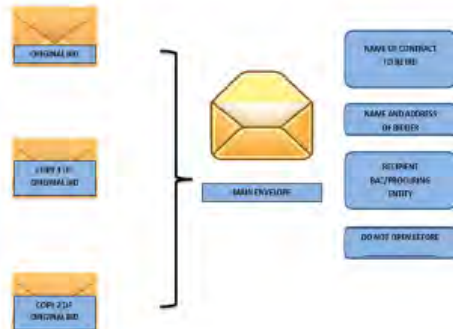
This learning module was developed by the Government Procurement Policy Board – Technical Support Office, and any form of reproduction and distribution without the author's approval is prohibited.



# SEALING AND MARKING OF BIDS

# 3

The ORIGINAL Technical/Financial Envelope and the COPY Envelopes, if any, shall be CONTAINED in ONE ENVELOPE



This learning module was developed by the Government Procurement Policy Board – Technical Support Office, and any form of reproduction and distribution without the author's approval is prohibited.





**ORIGINAL / COPY NO. \_\_\_\_\_**

**[BIDDER'S COMPANY NAME]**

**[COMPANY'S OFFICE ADDRESS]**

**PUBLIC BIDDING: [PROJECT TITLE]**

**BIDDING FOR  [LOT NO.]  :  [ITEM DESCRIPTION]  (if applicable)**

**THE CHAIRPERSON**

**BIDS AND AWARDS COMMITTEE**

**DEPARTMENT OF EDUCATION**

**REGIONAL OFFICE NO. 2**

**SCHOOLS DIVISION OF NUEVA VIZCAYA**

**[VENUE OF BID OPENING]**

**DO NOT OPEN BEFORE [TIME AND DATE OF BID OPENING]**

